



FALL PROTECTION EQUIPMENT  
MATÉRIEL DE PROTECTION CONTRE LES CHUTES

FIXED ANCHORAGE DEVICES

LIFELINES ON STANDARD POSTS

LIFELINES ON ABSORBER POSTS

GUARDRAIL AND ROOF ACCESS

GM - FALL PROTECTION  
GM - PROTECTION CONTRE LES CHUTES

A COMPLETE RANGE EXCLUSIVELY AIMED AT PROFESSIONALS  
UNE GAMME COMPLÈTE EXCLUSIVEMENT RÉSERVÉE AUX DISTRIBUTEURS



ZAC du Baconnet - 298 Allée des chênes - 69700 MONTAGNY - FRANCE  
Tél : +33 (0)4 78 56 22 73 - Fax : +33 (0)4 72 30 09 91  
Mail : [contact@gm-distribution.fr](mailto:contact@gm-distribution.fr)  
Site : [www.gm-distribution.fr](http://www.gm-distribution.fr)

comité - www.comité.com



Since its creation, the company GM (Group AJUVA SAFETY) invests in safety. Thanks to a commitment to innovation and continuous development, we offer a wide and competitive range of products. Certified ISO 9001, GM designs and develops protection systems against falls from height at work following strict specifications and respecting the European standards.

### **GM offers you a global solution:**

#### **TECHNICAL ADVICE:**

Our technical team offers its expertise to determine the best solution according to your expectations.

#### **CONCEPTION:**

Our engineering department

- Designs innovative and competitive products
- Develops solutions adapted to your projects
- Adapts to your need for specific applications

#### **MANUFACTURE:**

Our factory works under the seal of quality agreements and has equipments such as:

- Laser cutting
- Press
- Paint booth

This allows us to guaranty an optimum quality and reactivity in the manufacture of products.

#### **COMMERCIALIZATION:**

GM commercializes a complete range through its network of installers / distributors. Our installers are specialized and trained to the installation of our systems.





## FIXED ANCHORAGE DEVICES





## RAPID TRACEABILITY SYSTEM

S.T.R.®

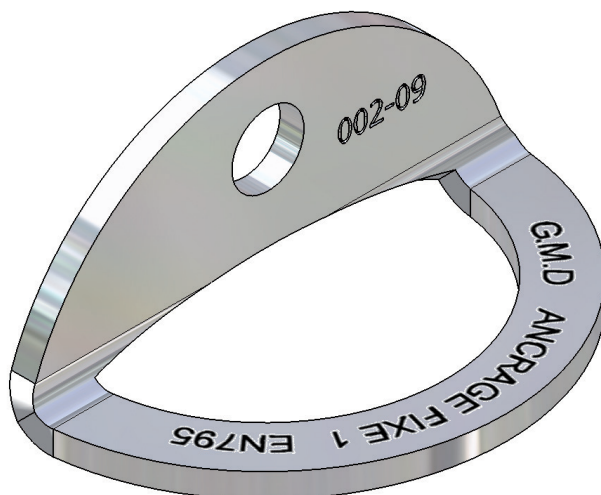
Each GM's anchor device is supplied with an identification target displaying a QR code. By scanning the QR code with a smartphone or a tablet, the user obtains directly all the technical information about the anchor device and its installation, via a web application developed for GM.



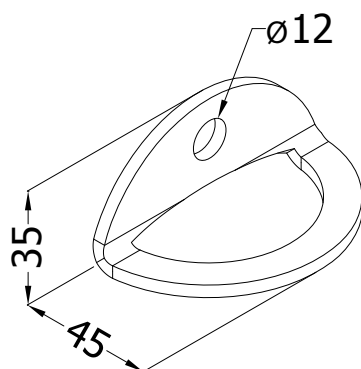
- The S.T.R.® is a new identification and traceability system solely aimed at GM's anchor devices.
- The S.T.R.® meets the requirements of the new standard EN 795: 2012 concerning the identification and the documentation of anchor devices.
- The S.T.R.® gives access to all the technical information about the anchor device (manual user, technical file, schematic drawing, pictures of installation, etc.):
  - Directly on site
  - To all the operators (supervising office, user, installer, etc.).
- The S.T.R.® web application enables to update at any moment and in real time information about the anchor system even when already delivered and/ or installed.
- The S.T.R.® optimizes the management of anchor devices with the display and the registration of intervention dates (installation, entry into service, last and next maintenance).



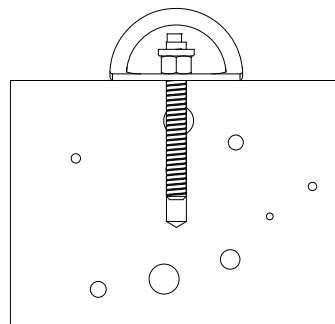
The **FIXED ANCHORAGE 1 plate** in **stainless steel** is designed to be fixed on concrete walls, metallic structure...



#### Dimensions of the fixed anchorage 1



#### Cut view of the fixing

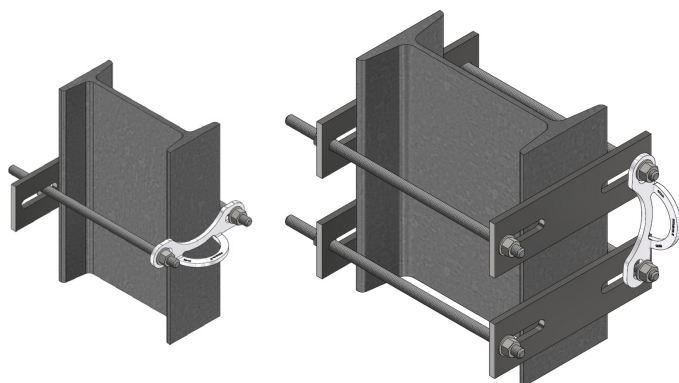


#### Technical details

- Fixing with chemical fixing or M12 screw

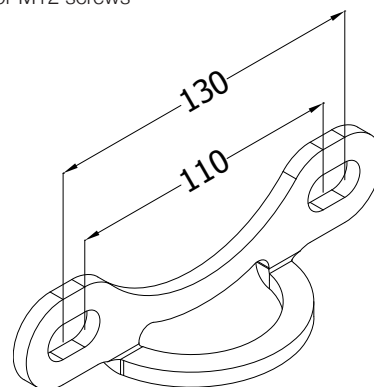
### Fixed Anchorage 2

The **FIXED ANCHORAGE 2 plate** in stainless steel is designed to be fixed on a concrete wall, metallic structure...



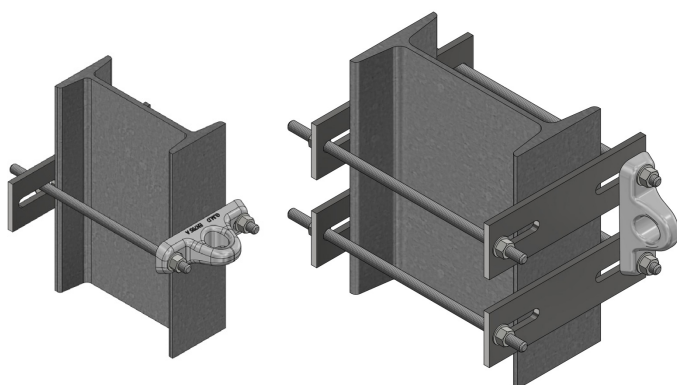
### Technical details

- 2 oblong holes to make the installation easier
- 2 fixing points for chemical fixings or M12 screws



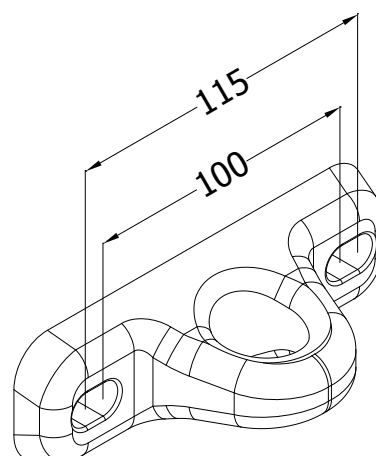
### Fixed Anchorage ALU

The **FIXED ANCHORAGE ALU plate** is moulded in a high resistance aluminium alloy. It is designed to be fixed on a concrete wall, metallic structure...

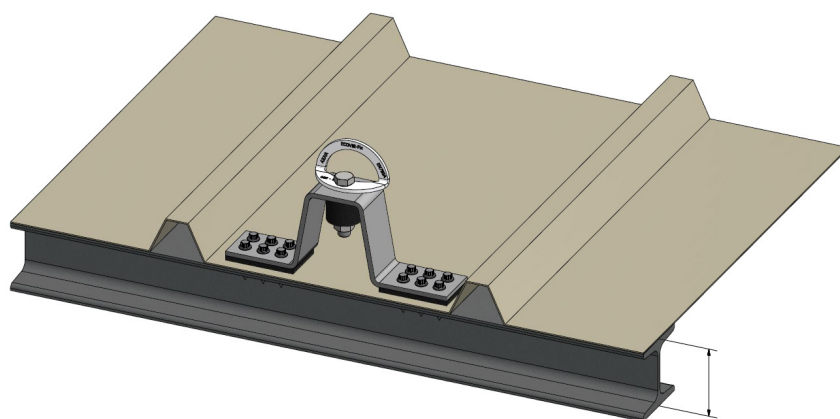


### Technical details

- 2 oblong holes to make the installation easier
- 2 fixing points for chemical fixings or M12 screws

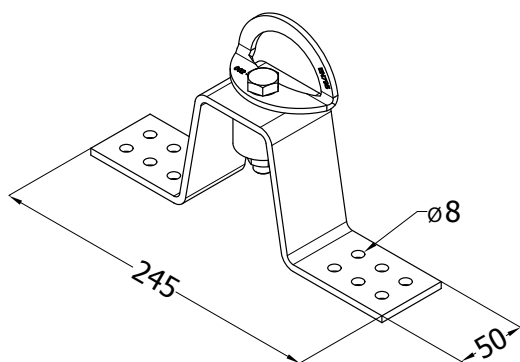


The **STEEL DECK ANCHORAGE** is an anchorage system designed for steel deck roofing. No cutting or amendment of the roofing complex is necessary. The STEEL DECK ANCHORAGE is equipped with an energy dissipipator and is supplied with a stainless steel FIXED ANCHORAGE 1 PLATE.



IPE 80 min.  
C Beam min. thickness 2mm

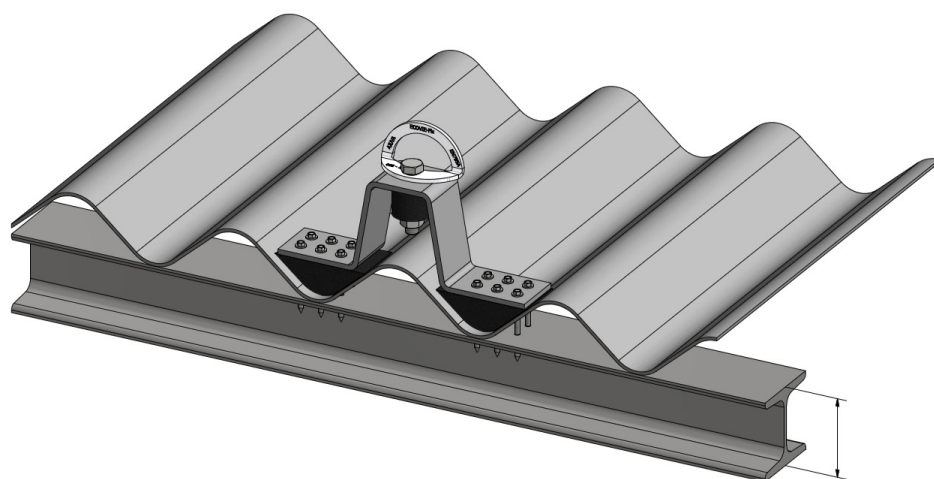
#### Dimensions of the Steel Deck Anchorage



#### Technical details

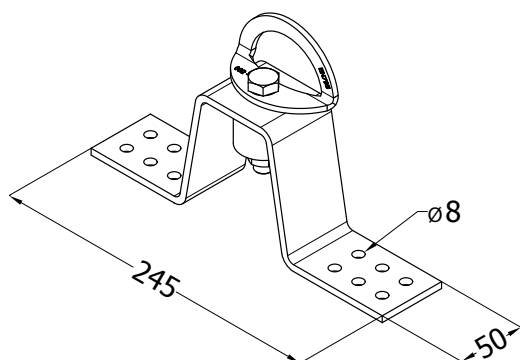
- Fixing by auto-drilling screws on the metallic beam
- Fixing on beam equivalent to an IPE 80 or a C beam (Min. thickness 2mm)
- Waterproofing assured by EPDM adhesive sole

The **FIBRECEMENT ROOFING ANCHORAGE** is an anchorage system designed for fibrece-ment roofing. No cutting or amendment of the roofing complex is necessary. The FIBRECEMENT ROOFING ANCHORAGE is equipped with an energy dissipator and is supplied with a stainless steel FIXED ANCHORAGE 1 PLATE.



IPE 80 min.  
C Beam min. thickness 2mm

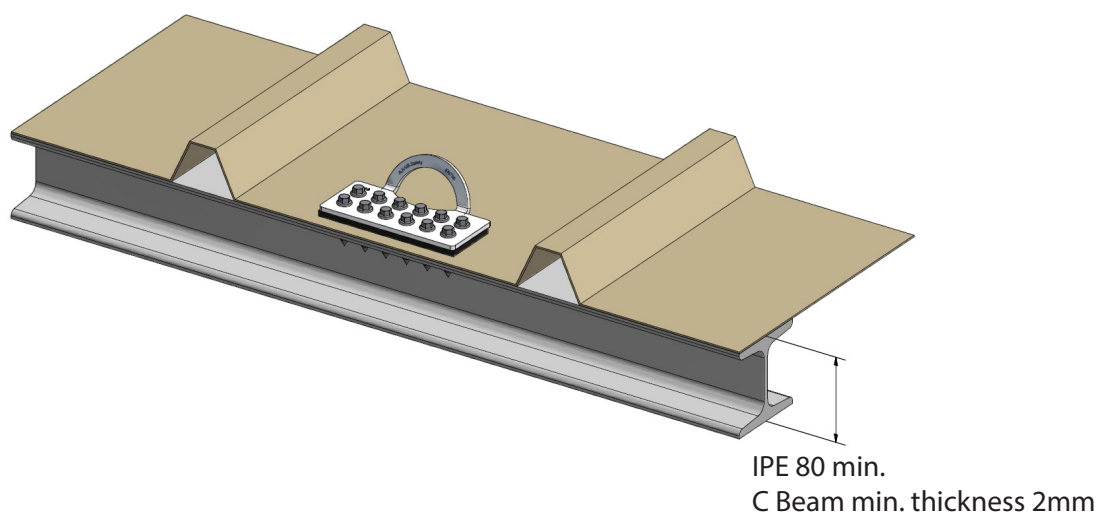
#### Dimensions of the Fibrecement Roofing Anchorage



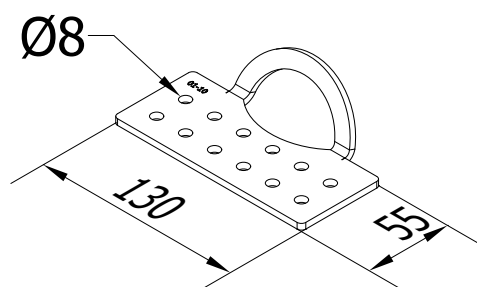
#### Technical details

- Fixing by auto-drilling screws on the metallic beam
- Fixing on beam equivalent to an IPE 80 or a C beam (Min. thickness 2mm)
- Waterproofing assured by EPDM pads to fit the waves of the roofing

The **STEEL DECK ANCHORAGE V2** in **stainless steel** is an anchorage system designed for steel deck roofing. No cutting or amendment of the roofing complex is necessary.



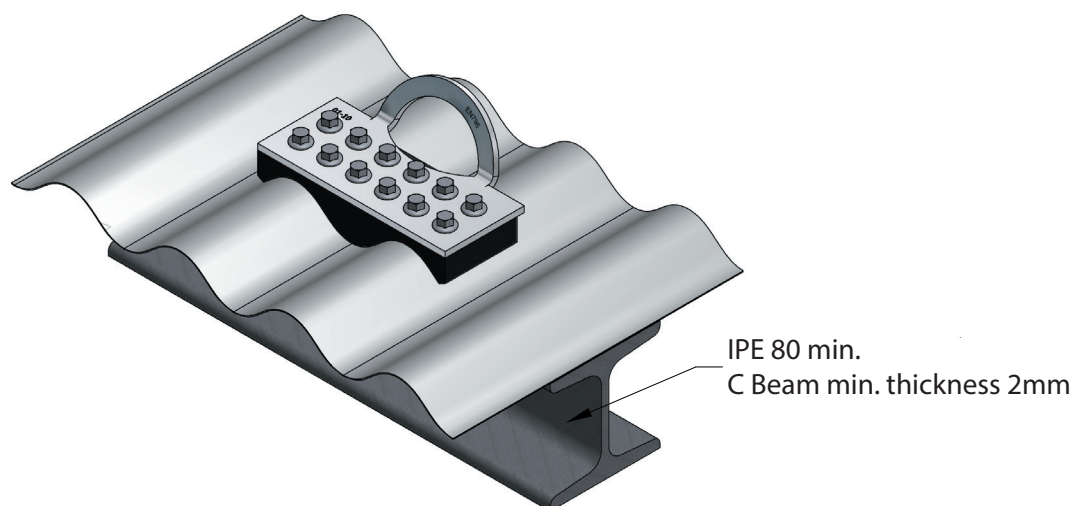
#### Dimensions of the Steel Deck Anchorage V2



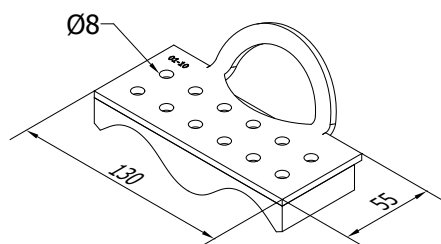
#### Technical details

- Fixing by auto-drilling screws on the metallic beam
- Fixing on beam equivalent to an IPE 80 or a C beam (Min. thickness 2mm)
- Waterproofing assured by EPDM adhesive sole

The **CORRUGATED STEEL SHEET ANCHORAGE** in **stainless steel** is an anchorage system designed for corrugated roofing on metallic beam. The plate is provided with EPDM adhesive sole to fit the waves of the coverage. No cutting or amendment of the roofing complex is necessary.



#### Dimensions of the Corrugated Steel Sheet Anchorage



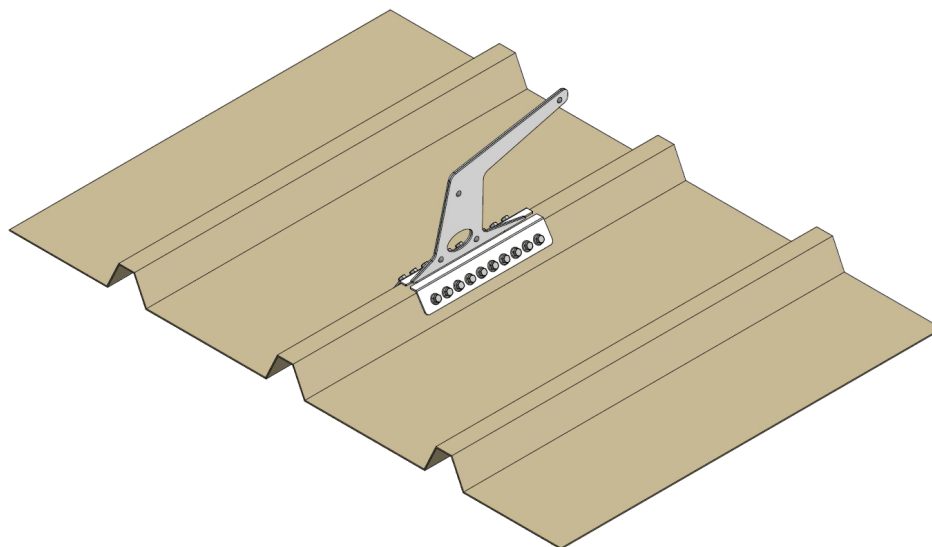
#### Technical details

- Fixing by auto-drilling screws on the metallic beam
- Fixing on beam equivalent to an IPE 80 or a C beam (Min. thickness 2mm)
- Waterproofing assured by EPDM adhesive sole

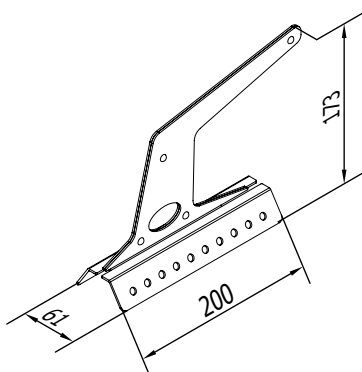




The **STEEL DECK ANCHOR HOOK** in **stainless steel** is an anchorage system designed for steel deck roofing. No cutting or amendment of the roofing complex is necessary. It can be used as a ladder hook (Standard EN517) or an individual anchorage device (Standard EN795 class A).



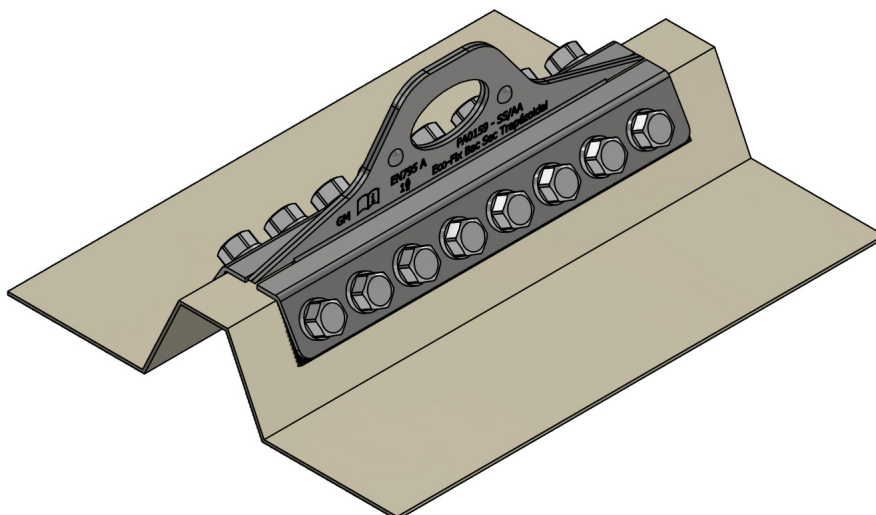
#### Dimensions of the Steel Deck Anchor Hook



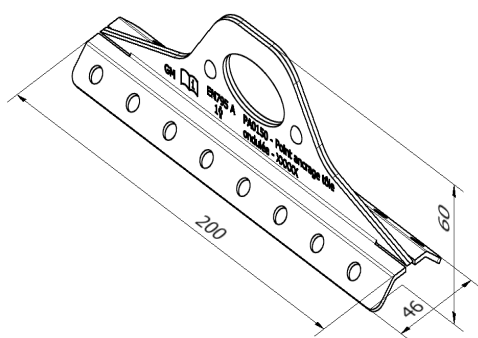
#### Technical details

- Fixing by auto-drilling screws
- Min. thickness of the steel deck: 0.5mm
- Waterproofing assured by EPDM washers and adhesive soles

The **TRAPEZOIDAL STEEL SHEET ANCHOR RING** in **stainless steel** is an anchorage system designed for trapezoidal wave steel sheet roofing. No cutting or amendment of the roofing complex is necessary.



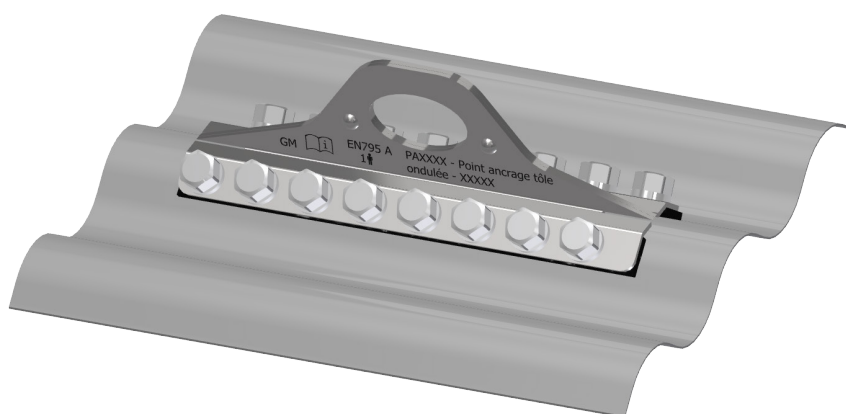
#### Dimensions of the Trapezoidal Steel Sheet Anchor Ring



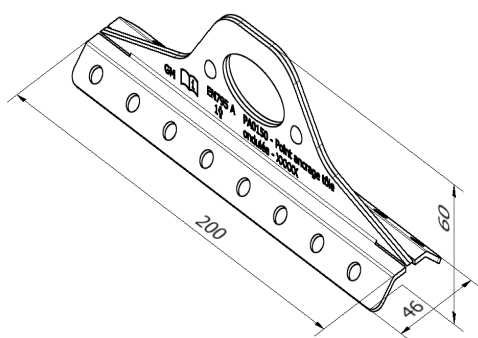
#### Technical details

- Fixing by auto-drilling screws
- Min. thickness of the steel sheet : 0.5mm
- Waterproofing assured by EPDM washers and adhesive soles

The **CORRUGATED STEEL SHEET ANCHOR RING** in **stainless steel** is an anchorage system designed for corrugated steel sheet roofing. No cutting or amendment of the roofing complex is necessary.



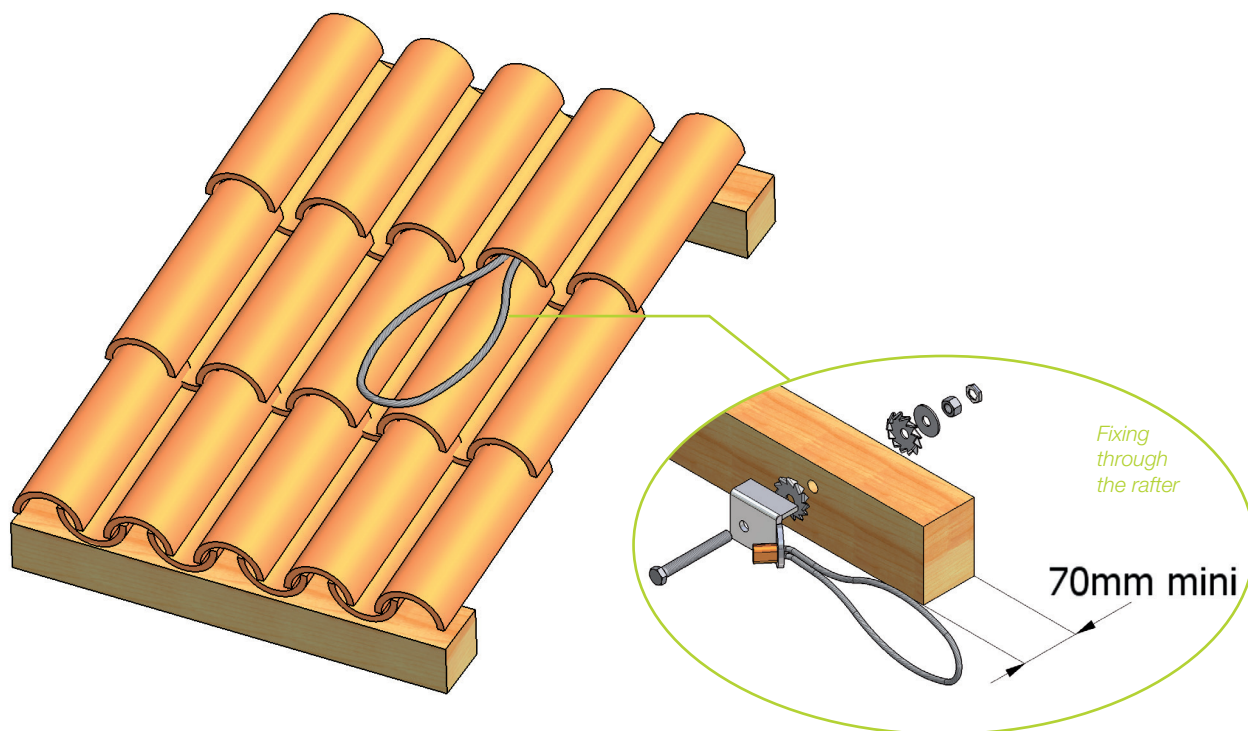
#### Dimensions of the Corrugated Steel Sheet Anchor Ring



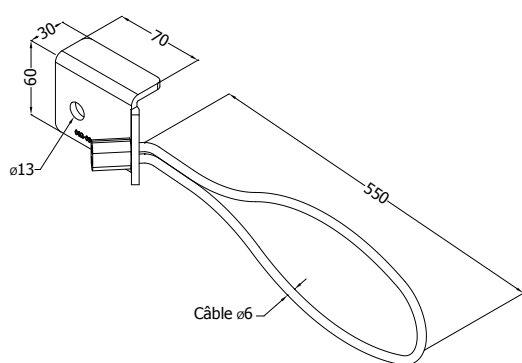
#### Technical details

- Fixing by auto-drilling screws
- Min. thickness of the steel sheet : 0.5mm
- Waterproofing assured by EPDM washers and adhesive soles

The **TILE ANCHORAGE** is a device designed to be fixed underneath the tiles. The cable only will be visible on the roof.



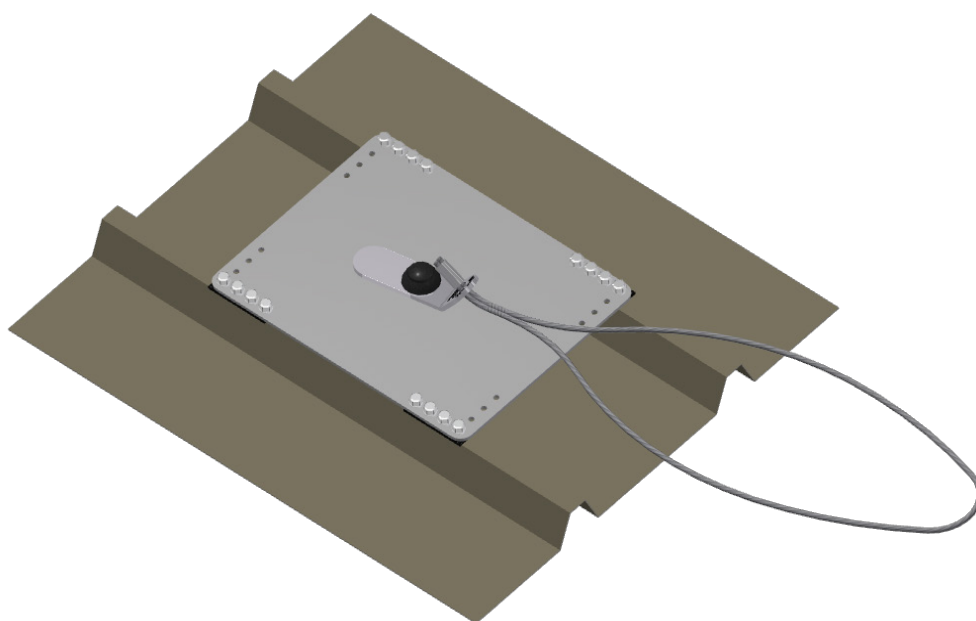
### Dimensions of the Tile Anchorage



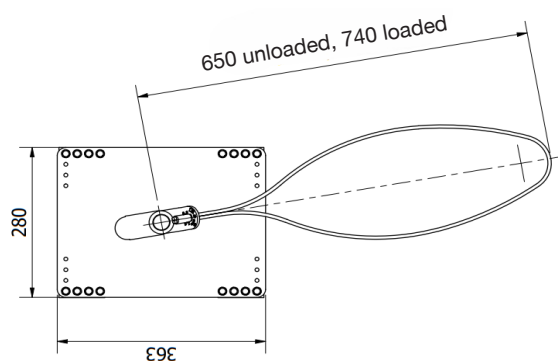
### Technical details

- Min. thickness of the rafter 70mm
- Fixing through the rafter with notched washers and bolts supplied with the device

The **SOLAR ANCHORAGE** is an anchoring device designed to be fixed under photovoltaic panels. No cutting or amendment of the roofing complex is necessary. The cable allows the user to move freely and can be hidden underneath the photovoltaic panels when not used to avoid shadow.

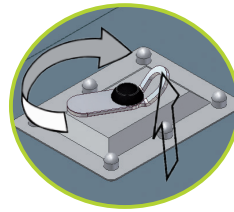


#### Dimensions of SOLAR Anchorage



#### Technical details

- Fixing by auto-drilling screws
- Min. thickness of the steel deck: 0.5mm

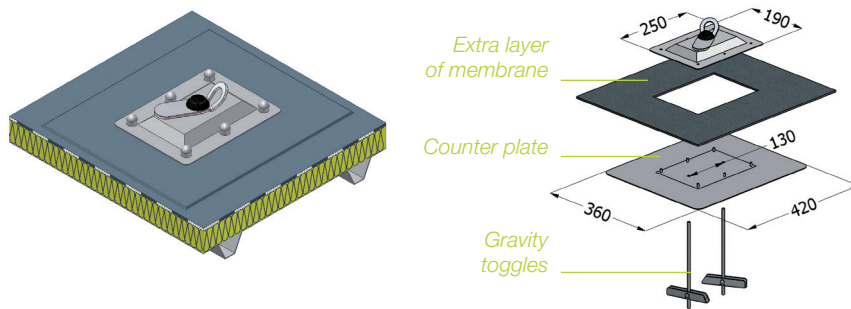


360° free rotating anchorage plate



The **DISSIPATOR ANCHORAGES** are designed to be installed on bituminous, PVC and other membrane roof systems, composite and built-up metal profiled roofing, zinc roofing without prior cutting of the roofing. The anchorages are supplied with a free rotating plate in order to provide the user with a great freedom of movement. This plate comprises an energy dissipator which allows a limitation of the efforts passed on the human body as well as the host structure in case of a fall.

### Fixing on steel deck flat roofing



#### Technical details

- Min. thickness of the steel deck: 0.63mm
- Drilling of two Ø25mm holes through the roof
- Fixing of the counter plate with two gravity toggles
- Welding of an extra layer of membrane over the counter plate for waterproofing
- Bolting of the anchorage on the counter plate
- Waterproofing assured by EPDM washers
- Extra layer of membrane not supplied

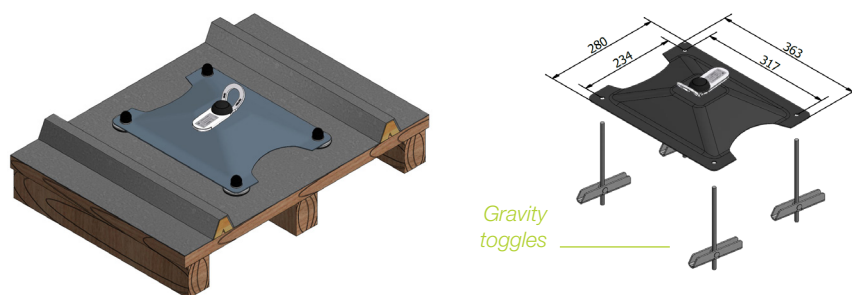
### Fixing on composite and built-up metal profiled roofing



#### Technical details

- Min. thickness of the steel deck: 0.50mm
- Composite roofing – steel deck min. thickness 0.50mm
- Space between the deck's waves: 250mm or 333mm
- Fixing with 16 auto-drilling screws equipped with waterproof washers
- Waterproofing assured by EPDM washers and EPDM adhesive tape

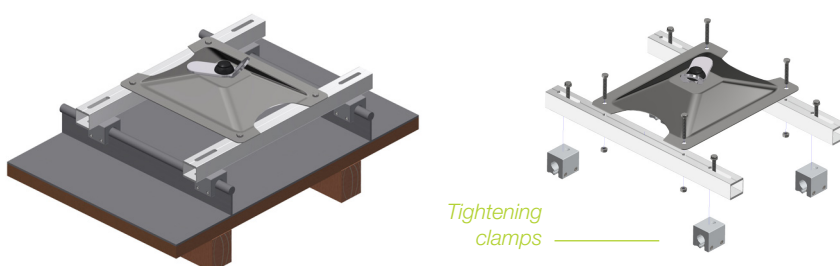
### Fixing on zinc roofing



#### Technical details

- Wooden battens min. thickness: 12mm
- Drilling of four Ø25mm holes through the roof
- Fixing with 4 gravity toggles
- Waterproofing assured by 4 EPDM washers

### Fixing on standing seams roofing

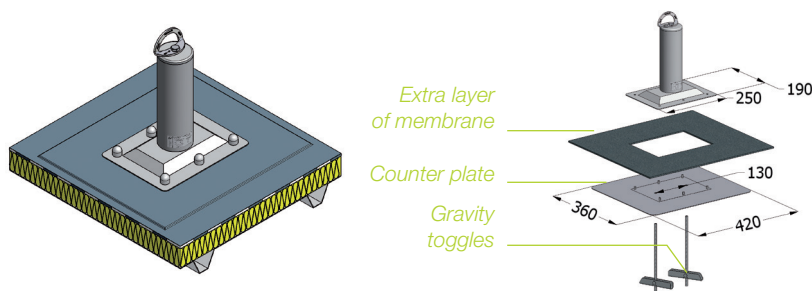


#### Technical details

- Fixing by tightening 4 clamps on the roofing seams
- Zinc, aluminium or copper roofing

The **ABSORBER ANCHORAGE POST** is an anchorage device with an energy absorber integrated in the post. In the event of a fall, this absorber allows a considerable reduction of the effort generated on the human body and on the host structure. Its installation is done without prior cutting of the roofing.

### Fixing on steel deck flat roofing



#### Technical details

- Min. thickness of the steel deck: 0.63mm
- Drilling of two Ø25mm holes through the roof
- Fixing of the counter plate with two gravity toggles
- Welding of an extra layer of membrane over the counter plate for waterproofing
- Bolting of the anchorage on the counter plate
- Waterproofing assured by EPDM washers
- Extra layer of membrane not supplied

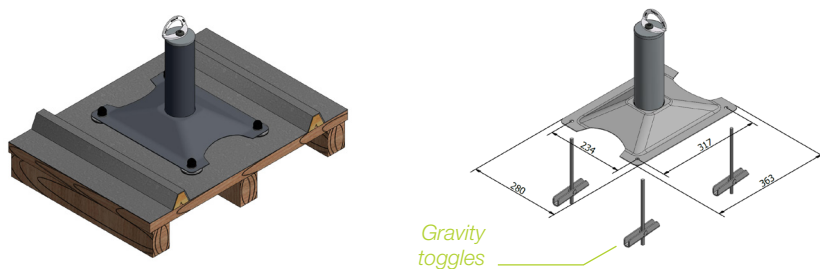
### Fixing on composite and built-up metal profiled roofing



#### Technical details

- Min. thickness of the steel deck: 0.50mm
- Composite roofing – steel deck min. thickness 0.50mm
- Space between the deck's waves: 250mm or 333mm
- Fixing with 16 auto-drilling screws equipped with waterproof washers
- Waterproofing assured by EPDM washers and EPDM adhesive tape

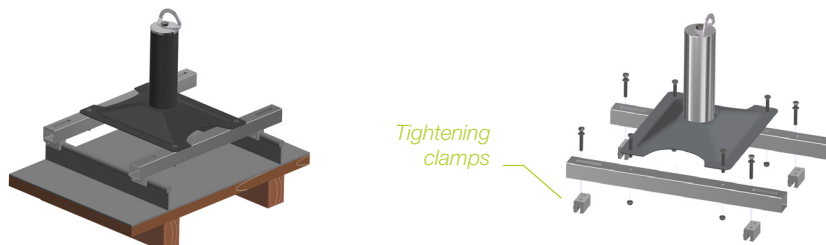
### Fixing on zinc roofing



#### Technical details

- Wooden battens min. thickness: 12mm
- Drilling of four Ø25mm holes through the roof
- Fixing with 4 gravity toggles
- Waterproofing assured by 4 EPDM washers

### Fixing on standing seams roofing



#### Technical details

- Fixing by tightening 4 clamps on the roofing seams
- Zinc, aluminium or copper roofing

### Fixing on standing seams roofing - on specific demand

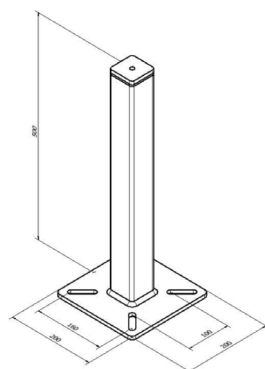


#### Technical details

- Fixing by tightening 4 clamps on the roofing seams
- Max. distance between seams:  $300 < e < 500$ mm

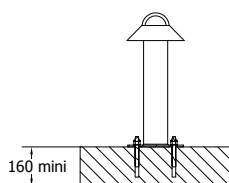
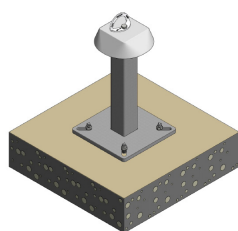


The **STANDARD ANCHORAGE POST** made of **hot dip galvanized steel** is supplied with an anchorage plate and a flange. This flange is designed to meet with industry standards for waterproofing.



*Standard post  
with removable flange*

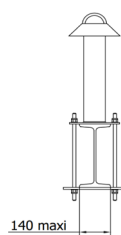
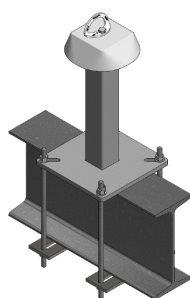
### STANDARD Post for concrete deck



#### Technical details

- Fixing with 4 M12 chemical fixings
- Min. thickness of the concrete deck: 160mm (if the thickness of the concrete deck is less than 160mm, please contact us)

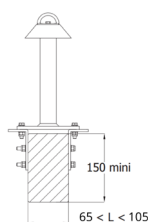
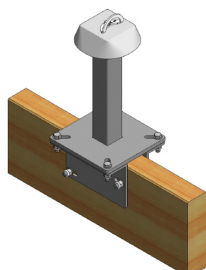
### STANDARD Post for metallic / wood beam



#### Technical details

- Possible clamping on metallic and wood beam
- Clamping realized with a galvanized steel clamp and 4 threaded rods M12
- Max. thickness of the beam: 140mm
- Option: Big clamps for clamping on a beam with max. thickness 300mm

### STANDARD Post for glue laminated timber beam



#### Technical details

- Fixing with 2 galvanized steel valleys and 2 M12 threaded rods
- Min. height of the beam: 150mm
- Thickness of the beam: between 60mm and 140mm





## STANDARD LIFELINES

LIFELINES ON STANDARD POSTS

A COMPLETE  
RANGE  
EXCLUSIVELY  
AIMED  
AT PROFESSIONALS



## RAPID TRACEABILITY SYSTEM

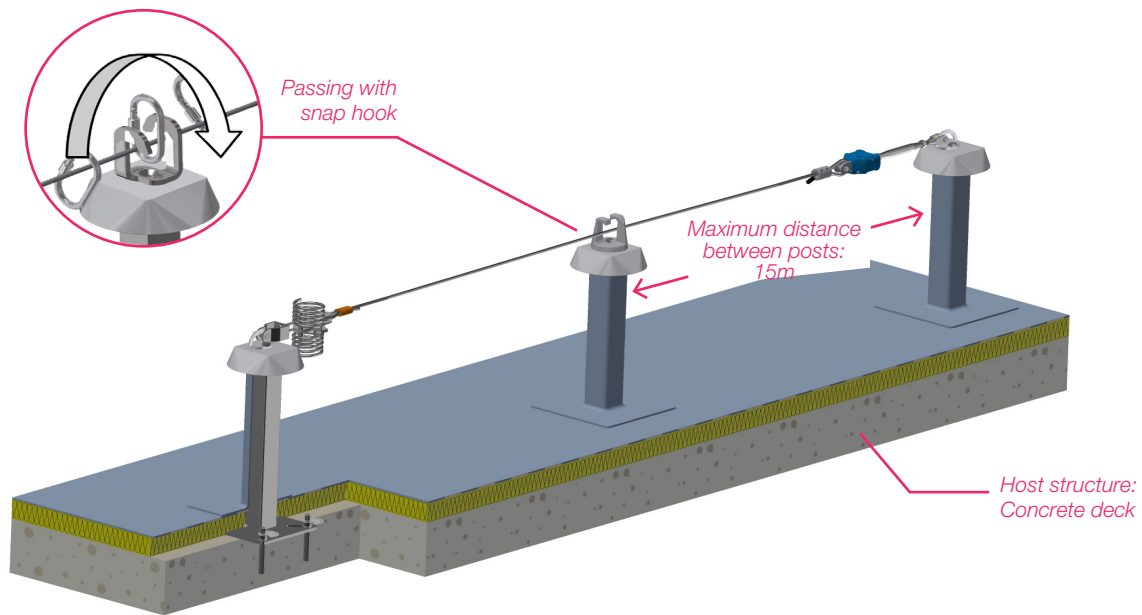
S.T.R.®

Each GM's anchor device is supplied with an identification target displaying a QR code. By scanning the QR code with a smartphone or a tablet, the user obtains directly all the technical information about the anchor device and its installation, via a web application developed for GM.

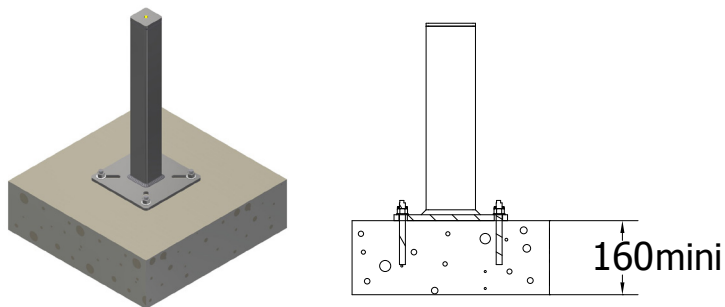


- The S.T.R.® is a new identification and traceability system solely aimed at GM's anchor devices.
- The S.T.R.® meets the requirements of the new standard EN 795: 2012 concerning the identification and the documentation of anchor devices.
- The S.T.R.® gives access to all the technical information about the anchor device (manual user, technical file, schematic drawing, pictures of installation, etc.):
  - Directly on site
  - To all the operators (supervising office, user, installer, etc.).
- The S.T.R.® web application enables to update at any moment and in real time information about the anchor system even when already delivered and/ or installed.
- The S.T.R.® optimizes the management of anchor devices with the display and the registration of intervention dates (installation, entry into service, last and next maintenance).



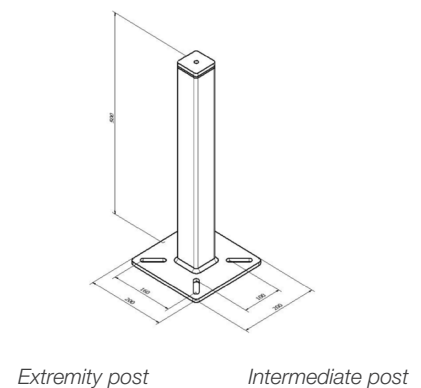


## Fixing

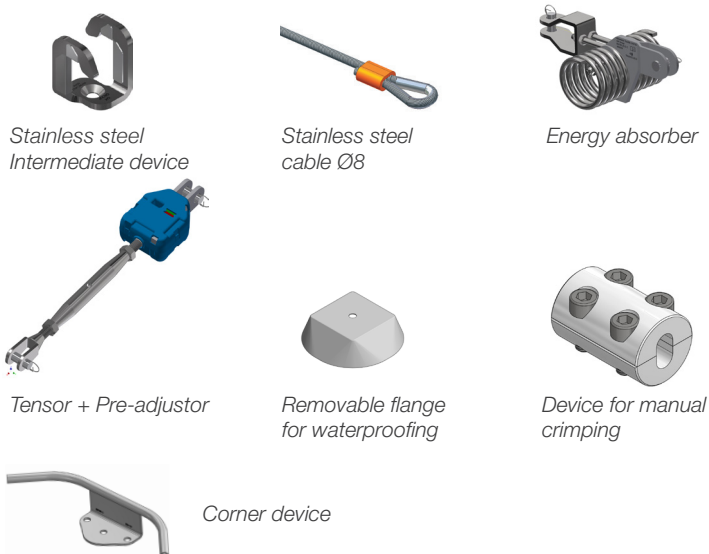


- Fixing with 4 M12 chemical fixings
- Posts available in height: 500mm.
- Specific manufacturing for higher heights.

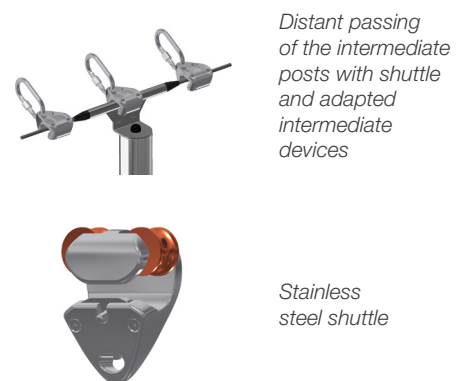
## Dimensions



## Accessories

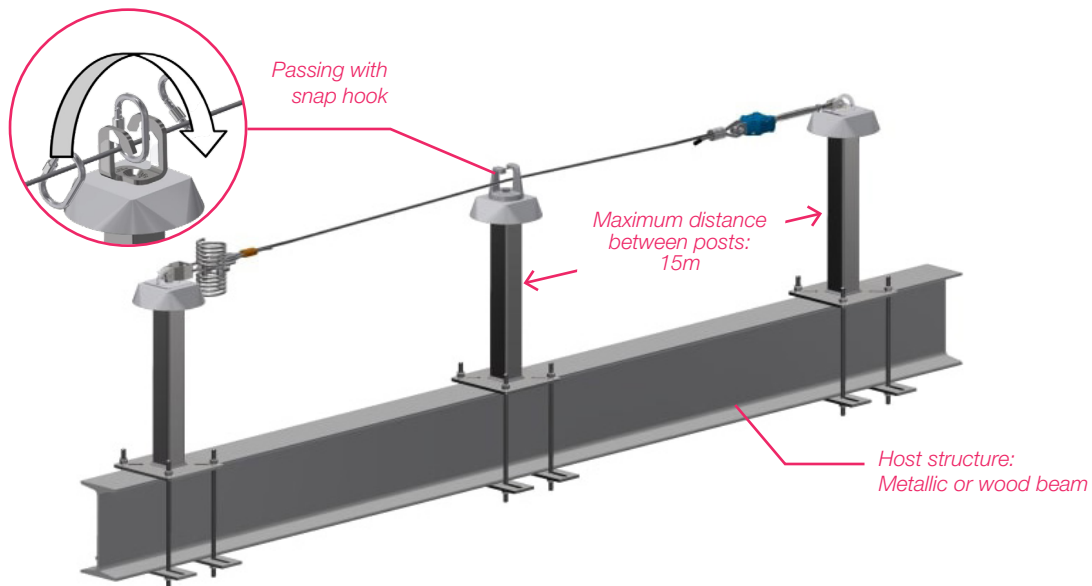


## Option

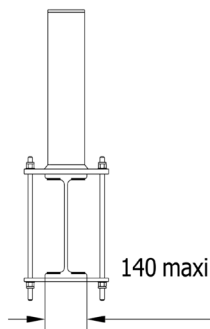
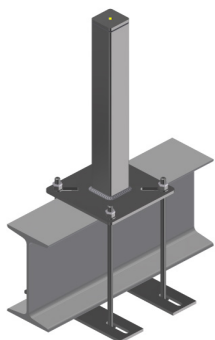


## STANDARD LIFELINES

# LIFELINE FOR METALLIC / WOOD BEAM (STANDARD CLAMPING)

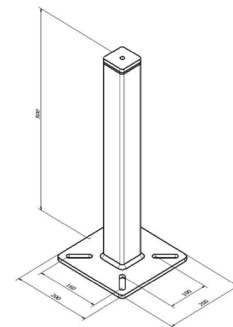


## Fixing



- Fixing with 2 galvanized steel clamps and 4 threaded rods M12
- Posts available in height: 500mm.
- Specific manufacturing for higher heights.

## Dimensions



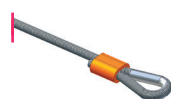
Extremity post

Intermediate post

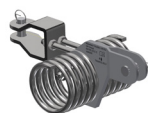
## Accessories



Stainless steel  
Intermediate device



Stainless steel  
cable Ø8



Energy absorber



Tensor + Pre-adjustor



Removable flange  
for waterproofing



Device for manual  
crimping

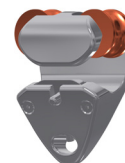


Corner device

## Option



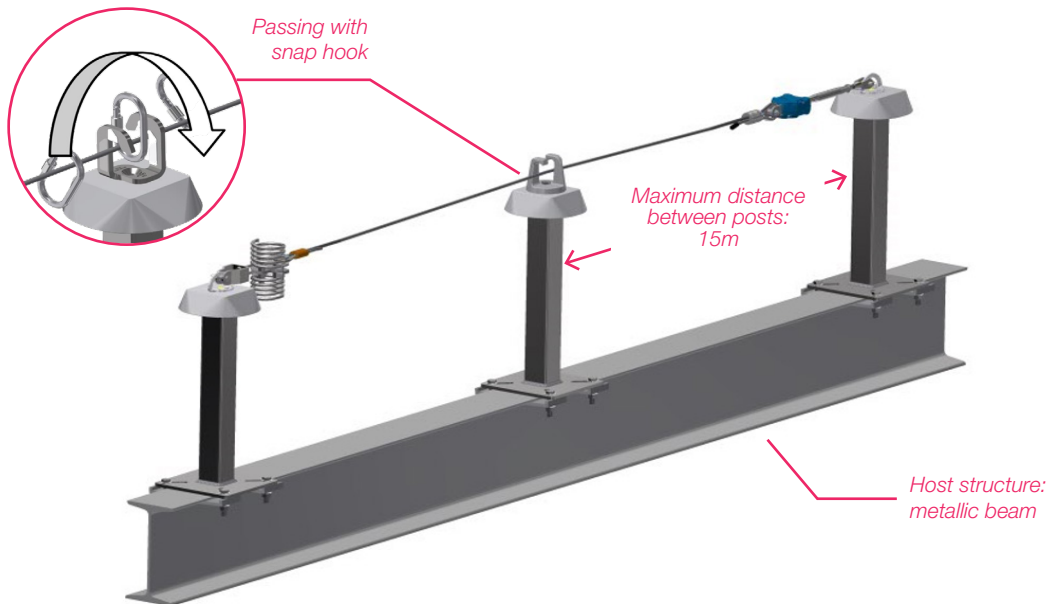
Distant passing  
of the intermediate  
posts with shuttle  
and adapted  
intermediate  
devices



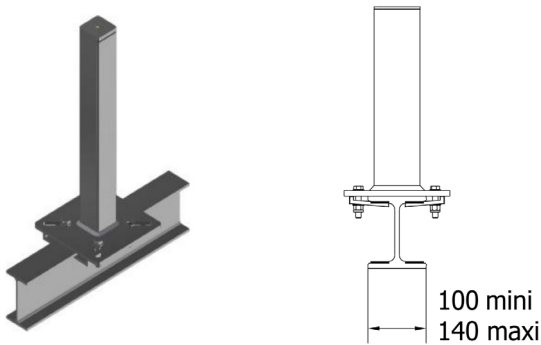
Stainless  
steel shuttle

## STANDARD LIFELINES

# LIFELINE FOR METALLIC BEAM (FLANGES CLAMPING)

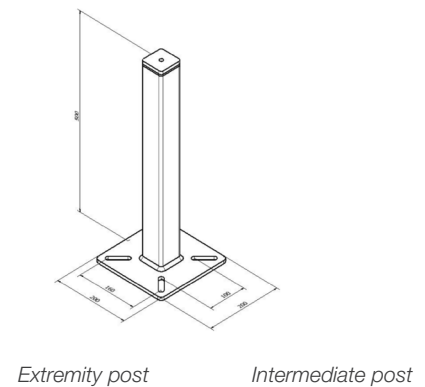


## Fixing

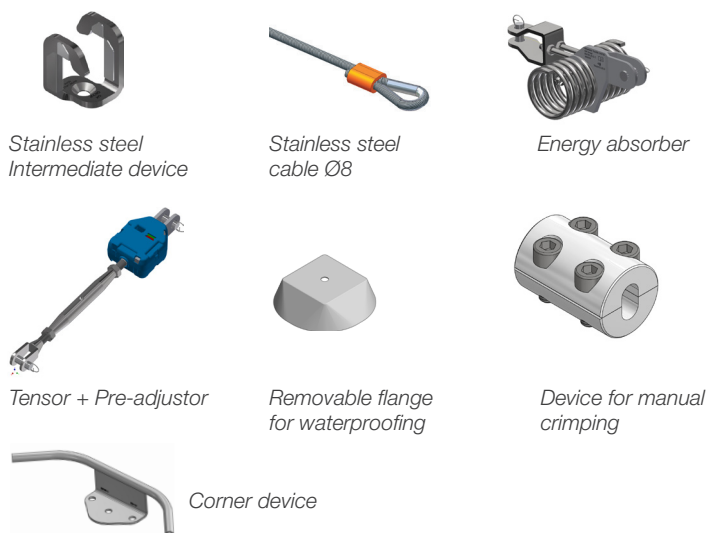


- Fixing with 4 galvanized steel clamps and 4 threaded rods M12
- Posts available in height: 500mm.
- Specific manufacturing for higher heights.

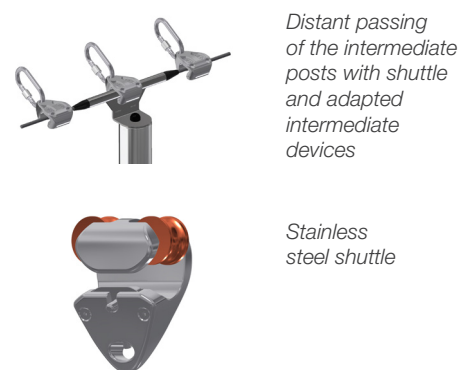
## Dimensions

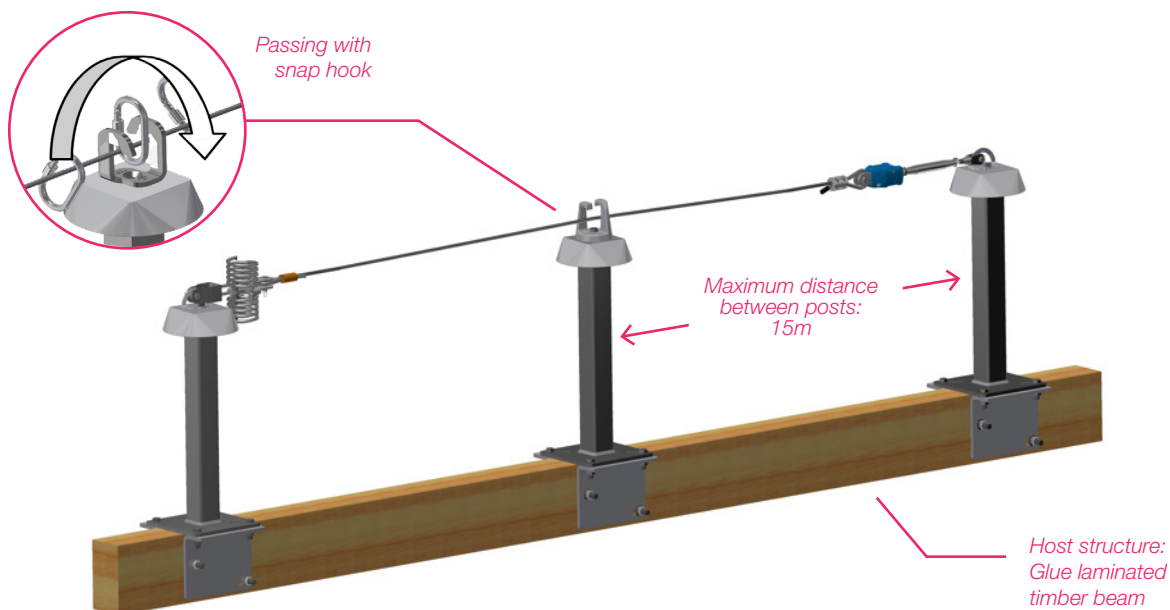


## Accessories

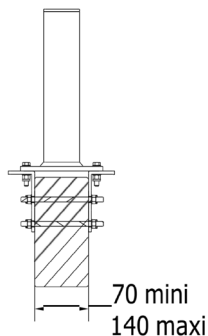
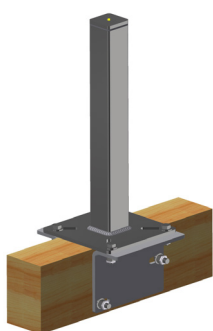


## Option



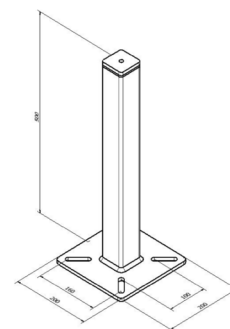


## Fixing



- Fixing with 2 valleys bolted on the beam and threaded rods M12
- Posts available in height: 500mm.
- Specific manufacturing for higher heights.

## Dimensions



Extremity post

Intermediate post

## Accessories



Stainless steel  
Intermediate device



Stainless steel  
cable Ø8



Energy absorber



Tensor + Pre-adjustor



Removable flange  
for waterproofing



Device for manual  
crimping



Corner device

## Option

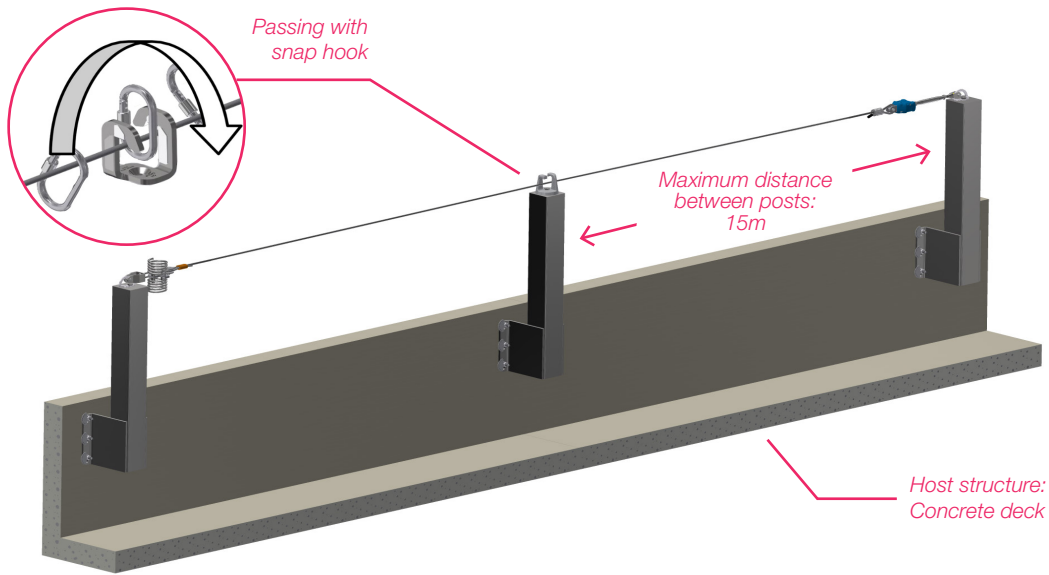


Distant passing  
of the intermediate  
posts with shuttle  
and adapted  
intermediate  
devices

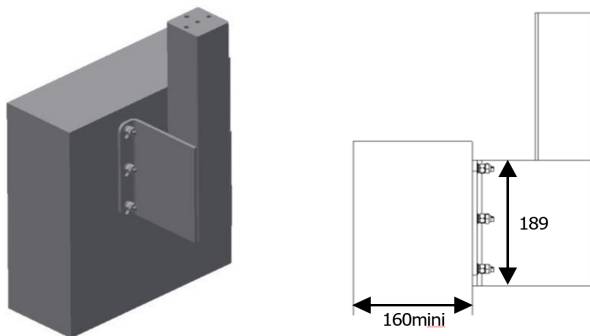


Stainless  
steel shuttle



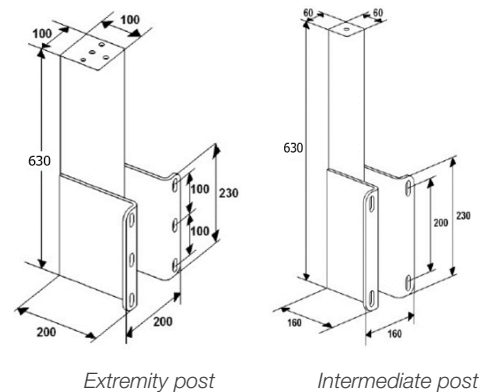


## Fixing



- Fixing with 4 or 6 M12 chemical fixings
- Posts available in height : 630mm and 830mm.
- Specific manufacturing for higher heights.

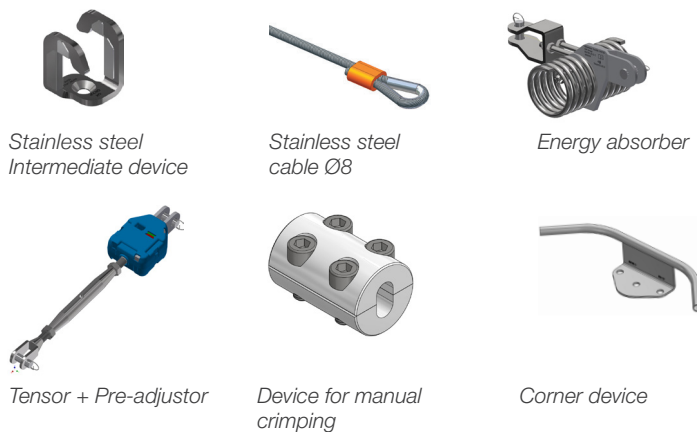
## Dimensions



Extremity post

Intermediate post

## Accessories

Stainless steel  
Intermediate deviceStainless steel  
cable Ø8

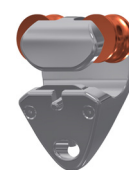
Energy absorber

Tensor + Pre-adjustor

Device for manual  
crimping

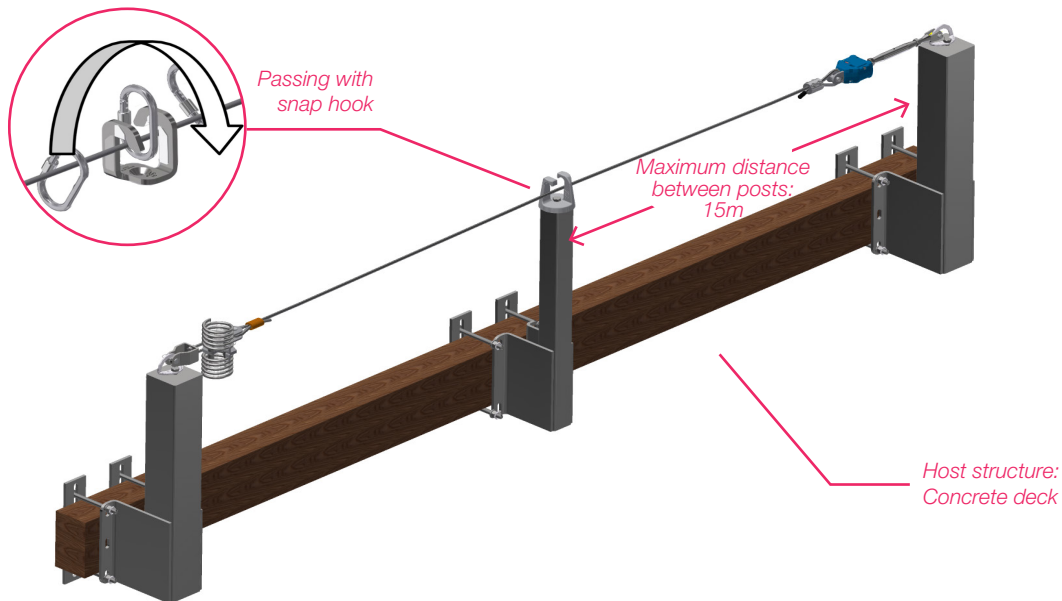
Corner device

## Option

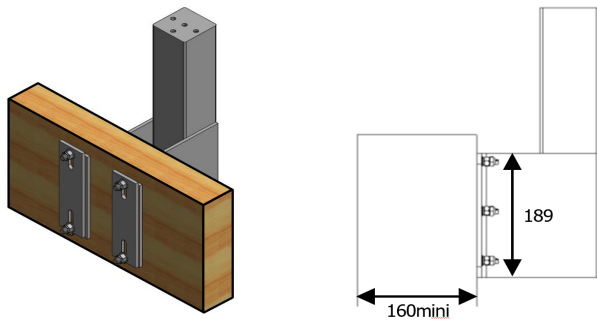
Distant passing  
of the intermediate  
posts with shuttle  
and adapted  
intermediate  
devicesStainless  
steel shuttle

## STANDARD LIFELINES

# WALL MOUNTED LIFELINE ON POSTS METALLIC / WOOD BEAM (SIDE CLAMPING)

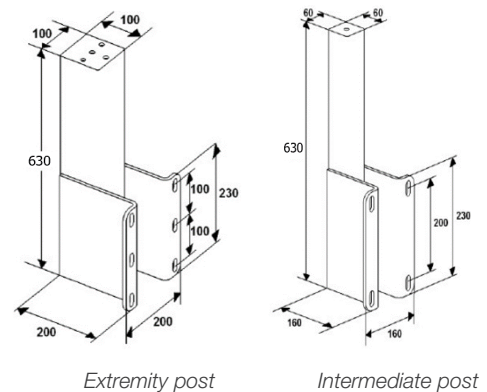


## Fixing

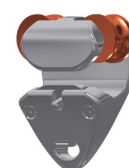


- Fixing with 2 counterplates
- Posts available in height : 630mm and 830mm.
- Specific manufacturing for higher heights.

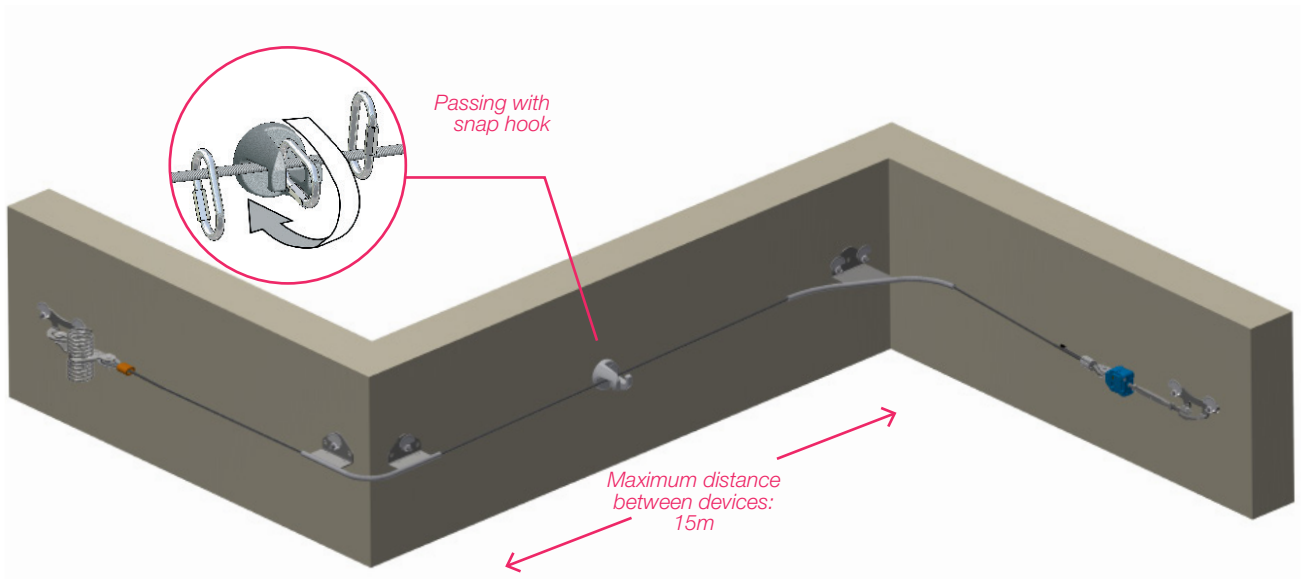
## Dimensions



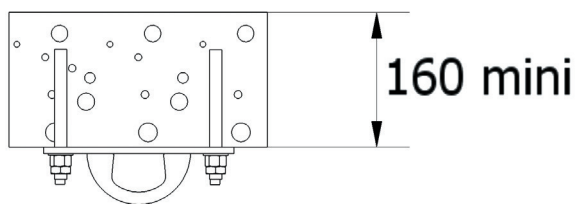
## Accessories



## Option

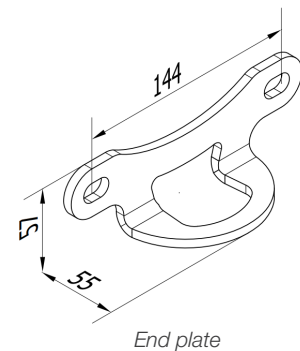


## Fixing

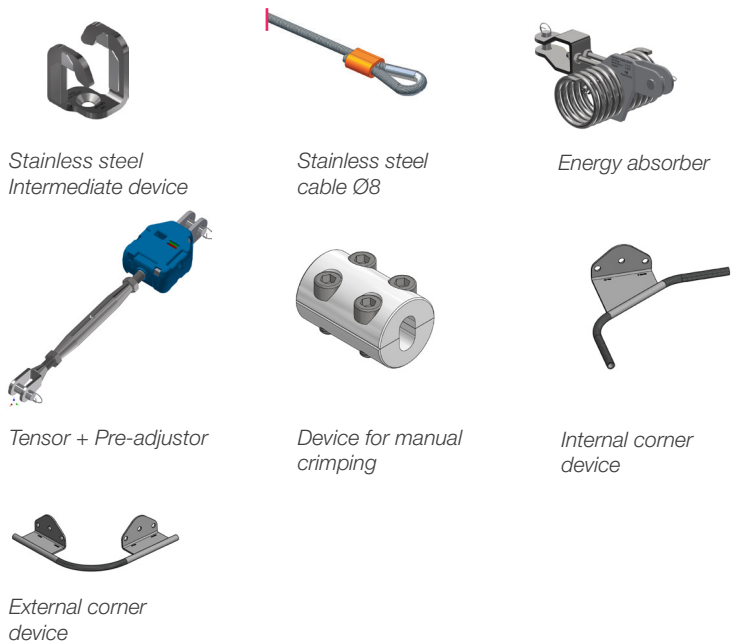


Fixing with two M12 chemical fixings. The device can also be fixed by standard clamping on wood or metallic beam.

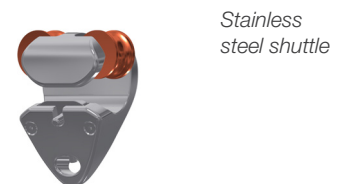
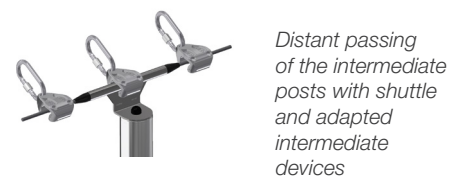
## Dimensions

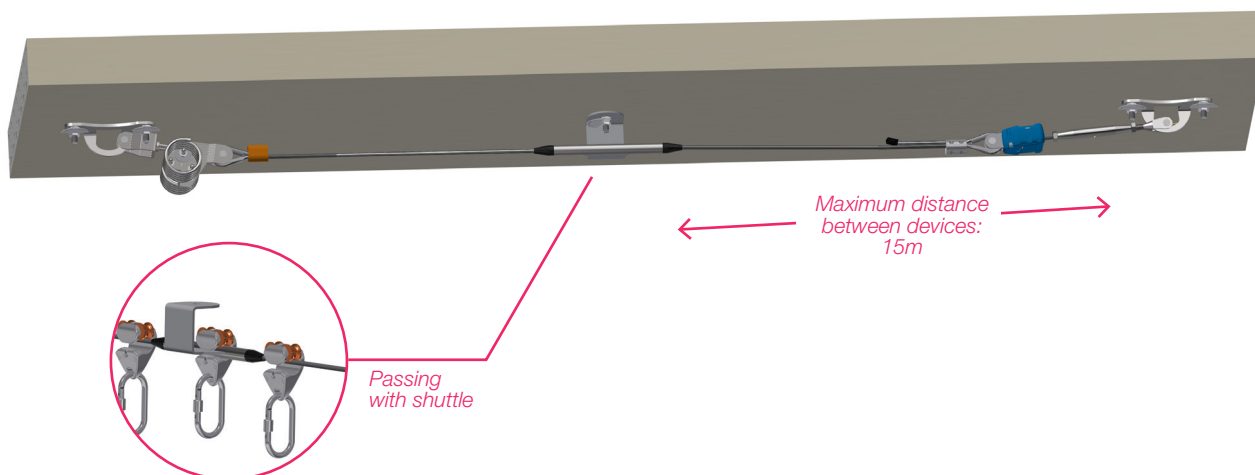


## Accessories

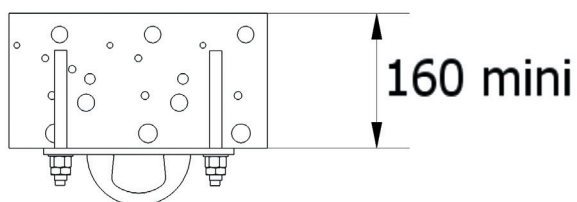


## Option



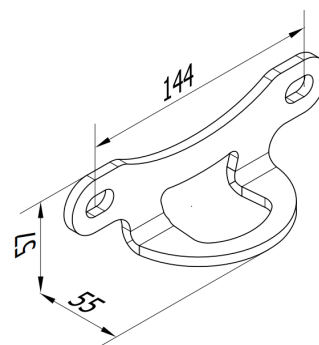


## Fixing



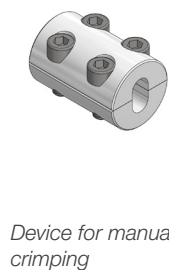
Fixing with two M12 chemical fixings. The device can also be fixed by standard clamping on wood or metallic beam.

## Dimensions



End plate

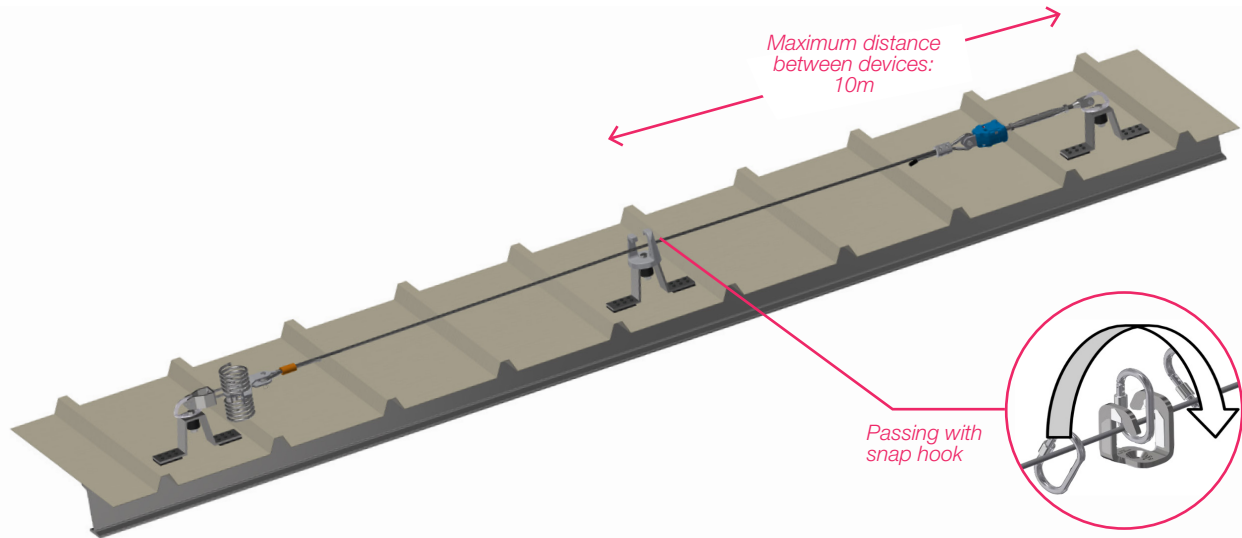
## Accessories



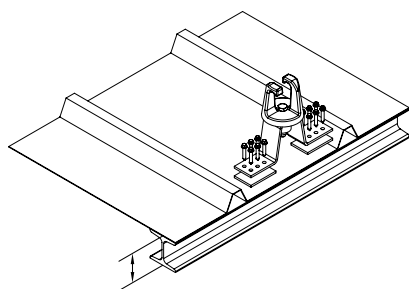
## Shuttle



The stainless steel shuttle is equipped with rollers mounted on ball bearing. It is specially designed to be used with a self-retracting lifeline.



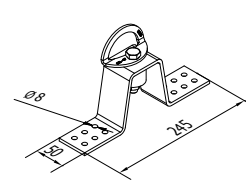
## Fixing



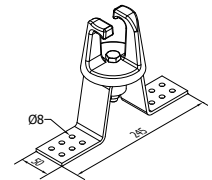
IPE 80 mini  
C Beam min. thickness 2mm

- Fixing by auto-drilling screws on the metallic beam
- Fixing on beam equivalent to an IPE 80 or a C beam (min. thickness 2mm)
- Waterproofing assured by EPDM washers and adhesive soles

## Dimensions



Extremity device

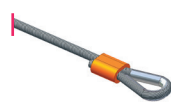


Intermediate device

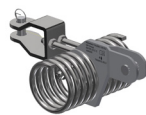
## Accessories



Stainless steel  
Intermediate device



Stainless steel  
cable Ø8



Energy absorber



Tensor + Pre-adjustor



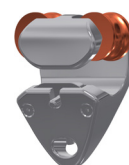
Device for manual  
crimping



Corner device

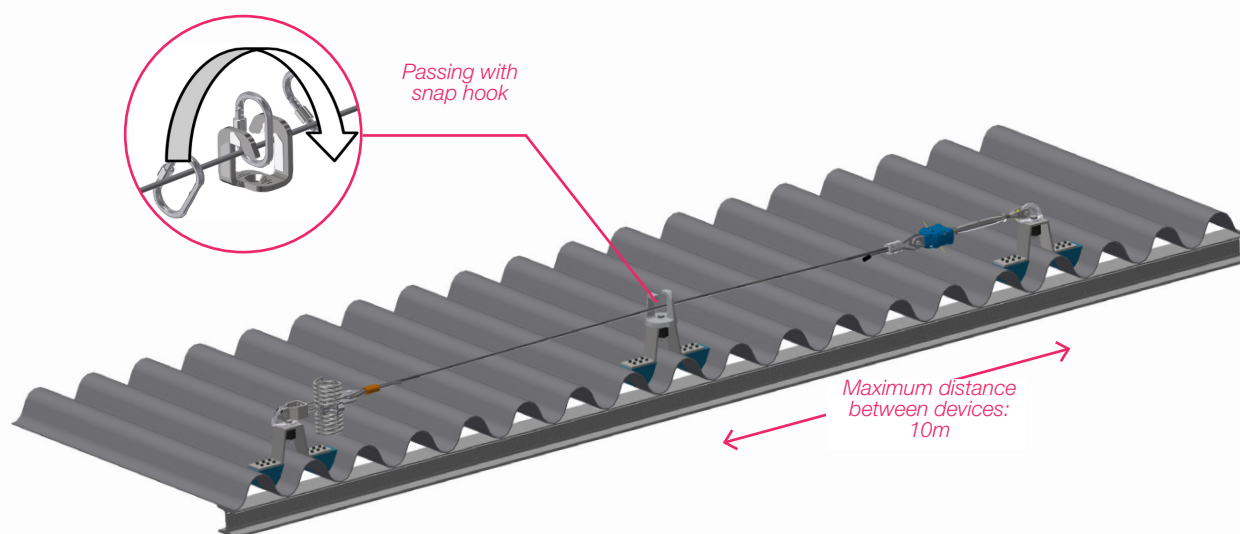


Distant passing  
of the intermediate  
posts with shuttle  
and adapted  
intermediate  
devices

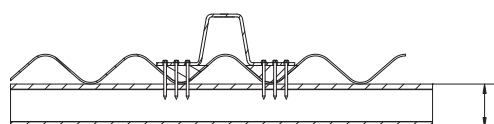


Stainless  
steel shuttle

## Option



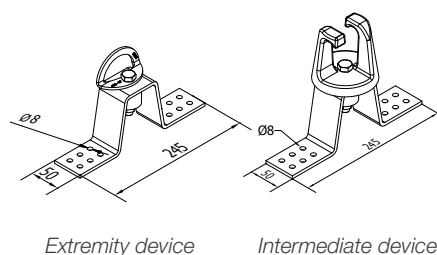
## Fixing



IPE 80 mini  
C Beam min. thickness 2mm

- Fixing by auto-drilling screws on the metallic beam
- Fixing on beam equivalent to an IPE 80 or a C beam (Min. thickness 2mm)
- Waterproofing assured by EPDM pads

## Dimensions



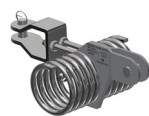
## Accessories



Stainless steel  
Intermediate device



Stainless steel  
cable Ø8



Energy absorber



Tensor + Pre-adjustor



Device for manual  
crimping

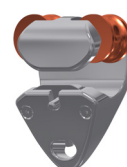


Corner device

## Option



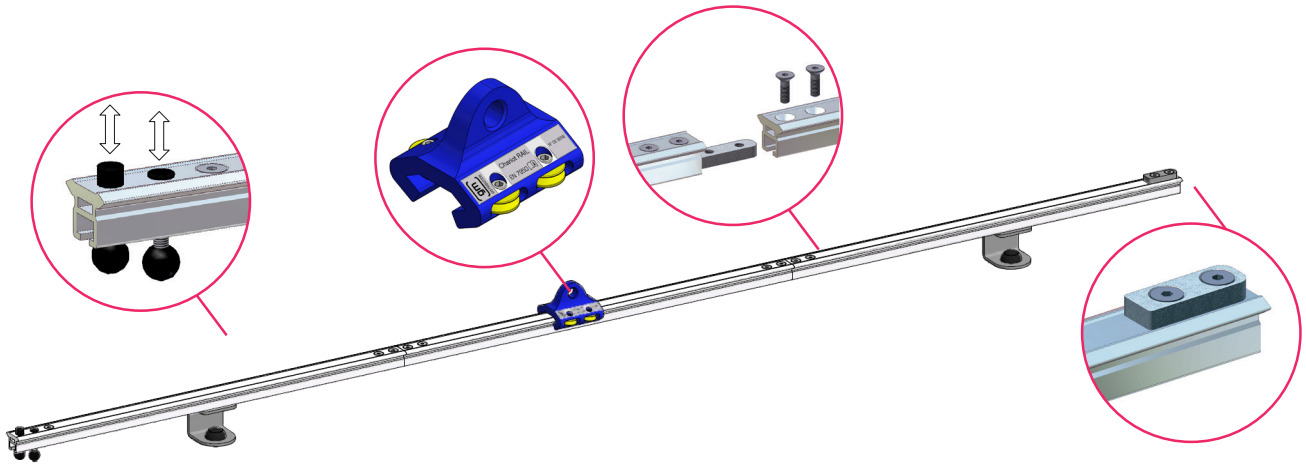
Distant passing  
of the intermediate  
posts with shuttle  
and adapted  
intermediate  
devices



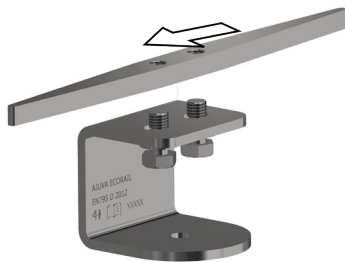
Stainless  
steel shuttle



GM security rail system can be used on any type of horizontal support (concrete structure, steel deck or steel deck flat roofing, zinc, wall-mounted, etc.) and overhead for a work in tension.

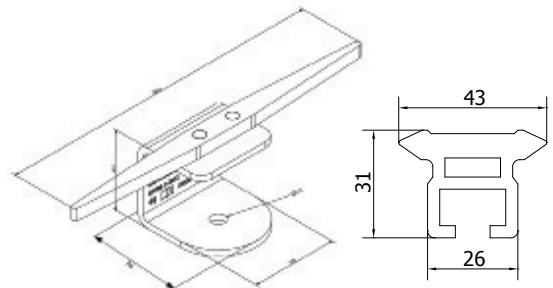


### Fixing



The security rail system can be fixed on any type of roof by bolting

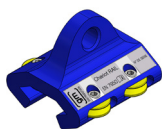
### Dimensions



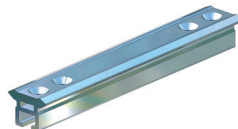
Rail support

Aluminium rail

### Components - Accessories



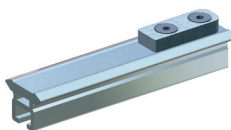
Aluminium **shuttle** with rollers mounted on ball bearing



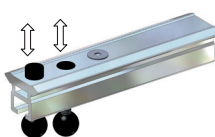
Anodised aluminium **rail**, machined at the ends for junctions and stops



**Junction** in stainless steel



Stainless steel **arrest system** for stopping the shuttle from moving

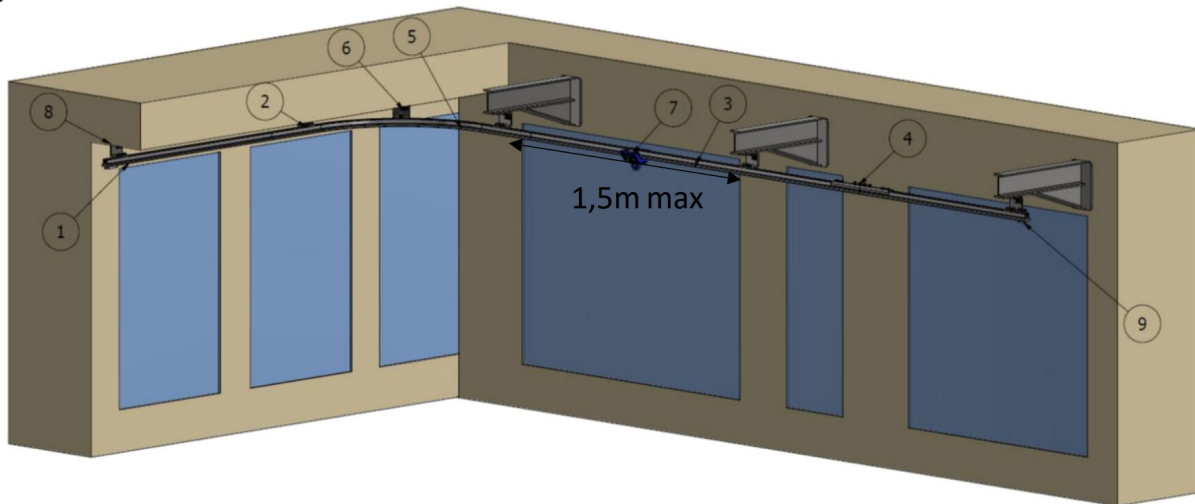


**Removable stop system** allowing input and output on the rail

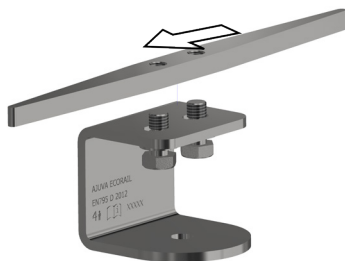


**Corner**, the rail can be curved to adapt the system to different layouts

GM suspended rail system can be fixed underneath a concrete or metal support for suspension work such as window cleaning. This device allows the user to move horizontally as well as vertically. It can support up to 4 users simultaneously. It is recommended to have one user per bay.

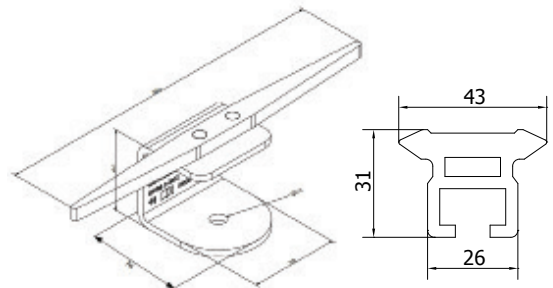


## Fixing



The security rail system can be fixed on any type of roof by bolting

## Dimensions



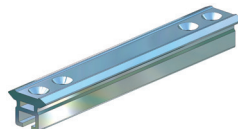
Rail support

Aluminium rail

## Components - Accessories



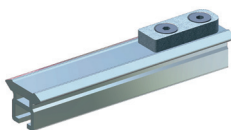
Aluminium **shuttle** with rollers mounted on ball bearing



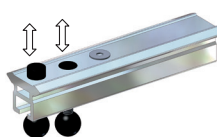
Anodised aluminium **rail**, machined at the ends for junctions and stops



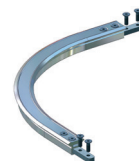
**Junction** in stainless steel



Stainless steel **arrest system** for stopping the shuttle from moving



**Removable stop system** allowing input and output on the rail



**Corner**, the rail can be curved to adapt the system to different layouts



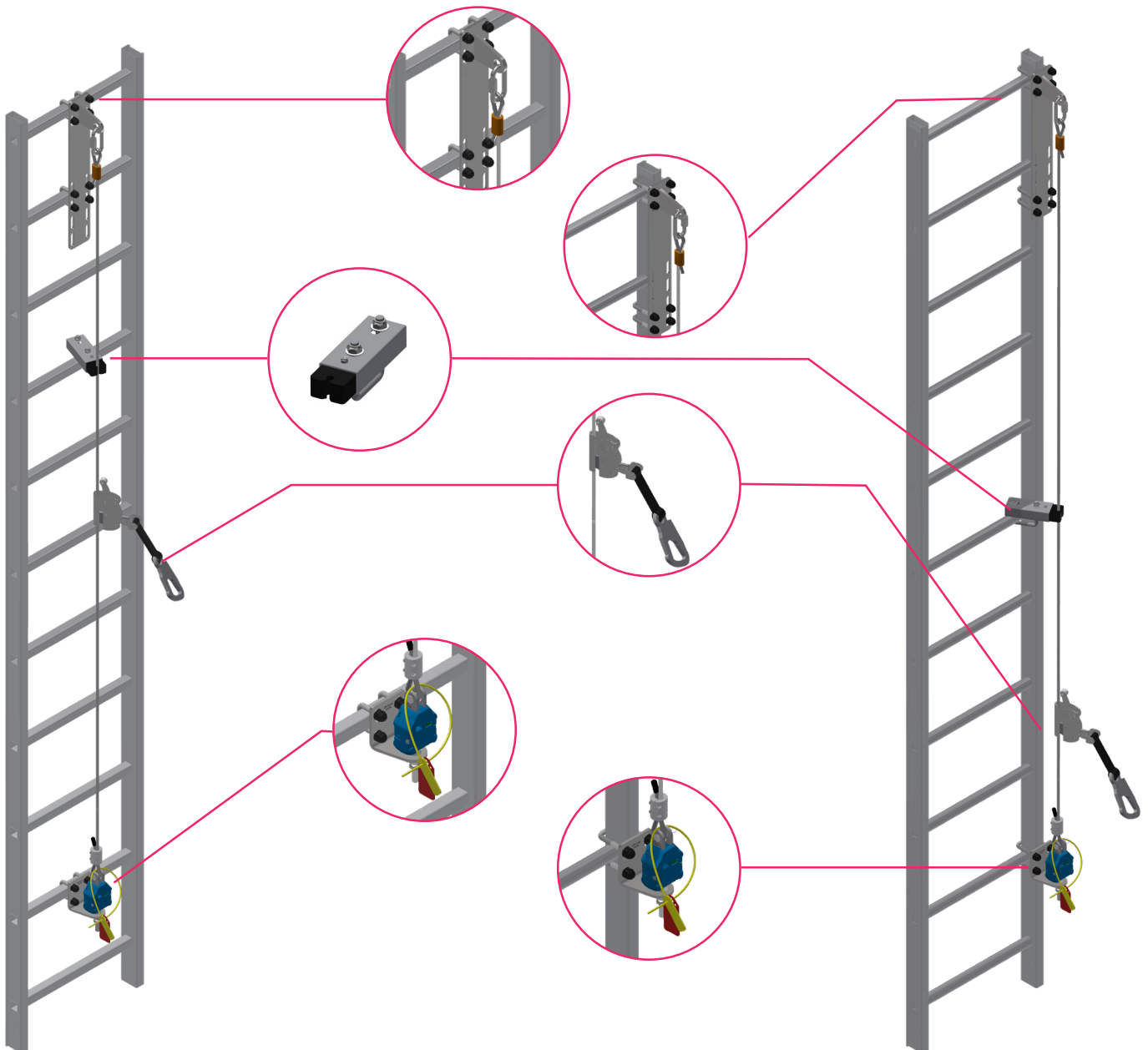
## Recommendations

GM vertical lifeline system a fall protection device that allows the user to safely climb on ladders.

Equipped with a fall arrest shuttle, the operator can climb up and down freely in complete safety.

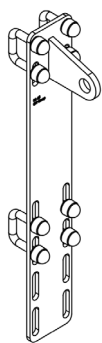
This system can be adapted to any type of applications such as simple ladders, wind turbines, lighting masts and pylons.

This device can be fixed on the rungs of the ladder or on its side stringers. It is easy to use and easy to install.

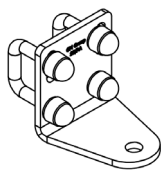


## Fixing on rungs

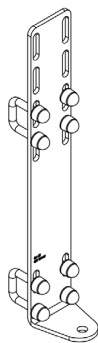
Rung width: 33mm maximum  
Span between rungs:  $250\text{mm} < e < 400\text{mm}$



Top fixing bracket  
on rungs



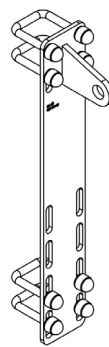
Lower fixing bracket  
on square rungs



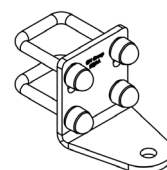
Lower fixing bracket  
on round rungs

## Fixing on lateral upright

Rung spacing  $250\text{mm} < e < 400\text{mm}$ ,  
Rung width  $\leq 33\text{mm}$



Top fixing bracket  
on lateral upright



Lower fixing bracket  
on lateral upright

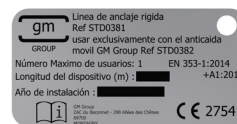
## Components - Accessories



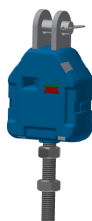
Cable lead



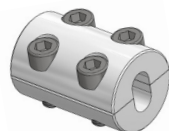
Stainless steel cable Ø8



Identification card



Tensor + Pre-adjustor

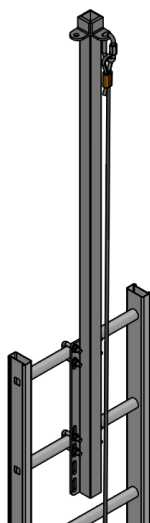


Device for manual crimping

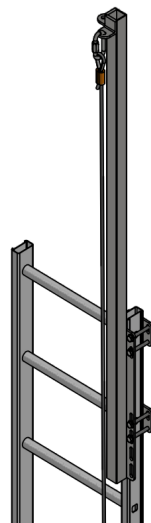


Fall arrest shuttle

## Extension option for ladder exit



Extension fixed on rungs height 1500 mm



Extension fixed on lateral upright height 1500 mm

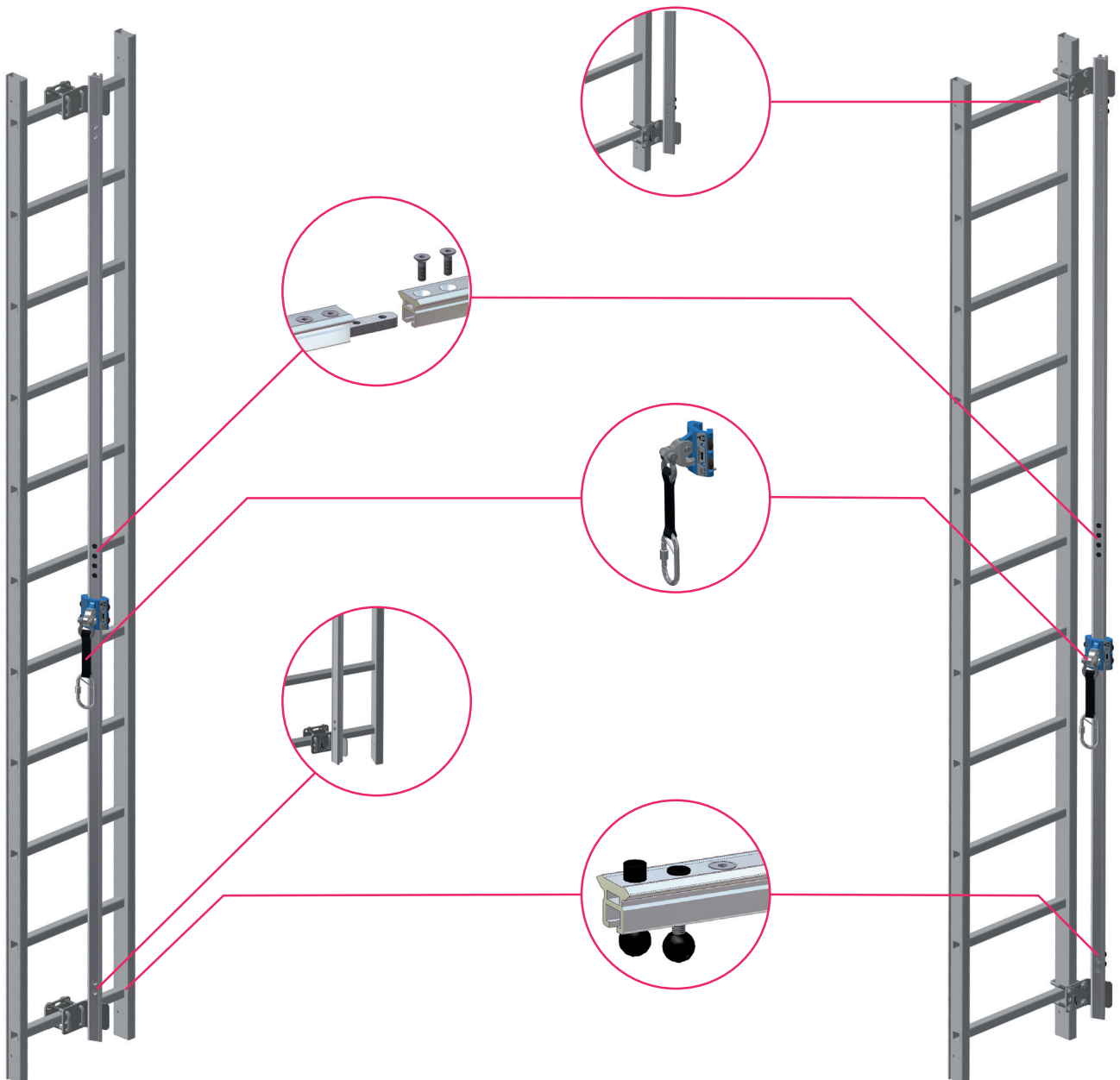
## Recommendations

GM vertical fall arrester Rail is a fall protection device that allows the user to travel on vertical structures.

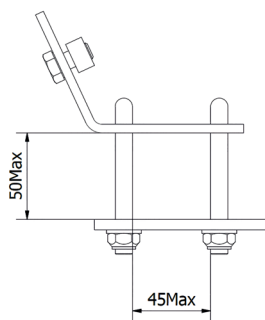
Equipped with a fall arrest shuttle, the operator can climb up and down freely in complete safety.

This system can be adapted to any type of applications such as simple ladders, wind turbines, lighting masts, pylons and roofs.

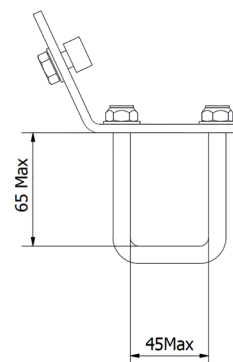
This device can be fixed on the rungs of the ladder or on its side stringers. It is easy to use and easy to install.



## Dimensions

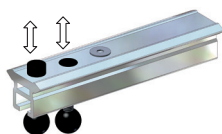


*Fixing Support for rail on rung*

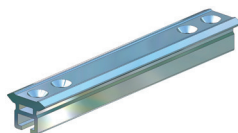


*Fixing Support for rail on upright*

## Components - Accessories



**Removable stop system** allowing input and output on the rail



**Anodised** aluminum rail, machined at the ends for junctions and tops

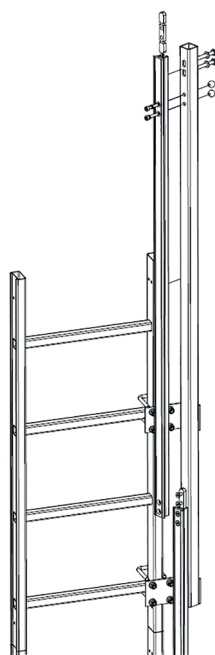


**Junction in stainless steel**



**Fall arrest shuttle** on rail

## Extension option for ladder exit



*Extension fixed on lateral upright height 1500*



## LIFELINES ON ABSORBER POSTS

A COMPLETE  
RANGE  
EXCLUSIVELY  
AIMED  
AT PROFESSIONALS



## RAPID TRACEABILITY SYSTEM

S.T.R.®

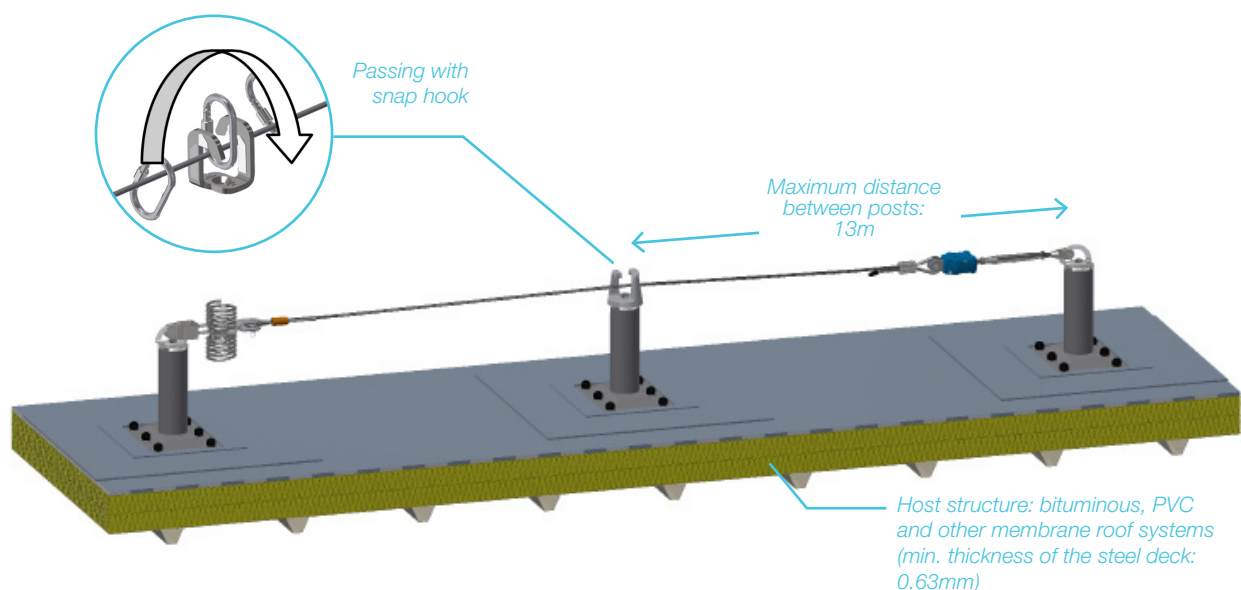
Each GM's anchor device is supplied with an identification target displaying a QR code. By scanning the QR code with a smartphone or a tablet, the user obtains directly all the technical information about the anchor device and its installation, via a web application developed for GM.



- The S.T.R.® is a new identification and traceability system solely aimed at GM's anchor devices.
- The S.T.R.® meets the requirements of the new standard EN 795: 2012 concerning the identification and the documentation of anchor devices.
- The S.T.R.® gives access to all the technical information about the anchor device (manual user, technical file, schematic drawing, pictures of installation, etc.):
  - Directly on site
  - To all the operators (supervising office, user, installer, etc.).
- The S.T.R.® web application enables to update at any moment and in real time information about the anchor system even when already delivered and/ or installed.
- The S.T.R.® optimizes the management of anchor devices with the display and the registration of intervention dates (installation, entry into service, last and next maintenance).

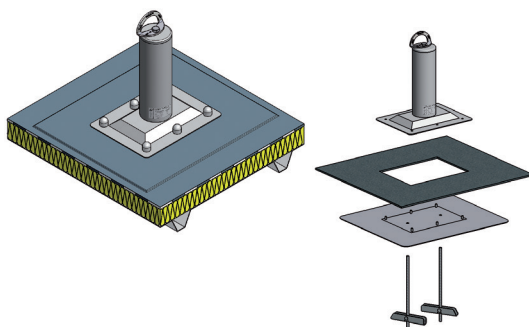




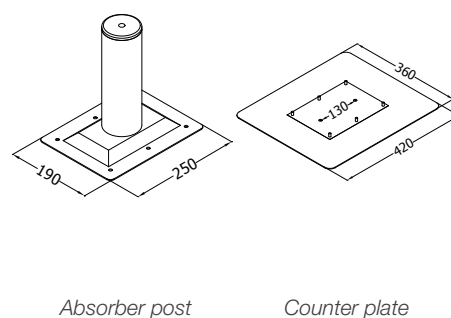


## Fixing

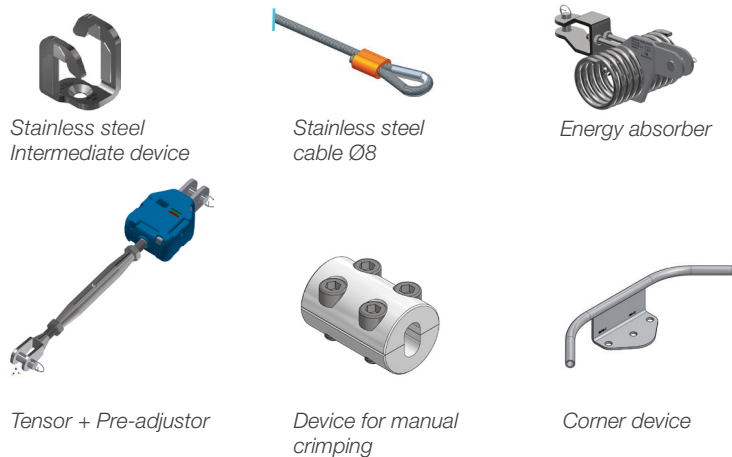
- Drilling of two Ø25mm holes through the roof
- Fixing of the counter plate with 2 gravity toggles
- Welding of an extra layer of membrane over the counter
- Waterproofing assured by EPDM washers
- Max. thickness of the system: 180mm



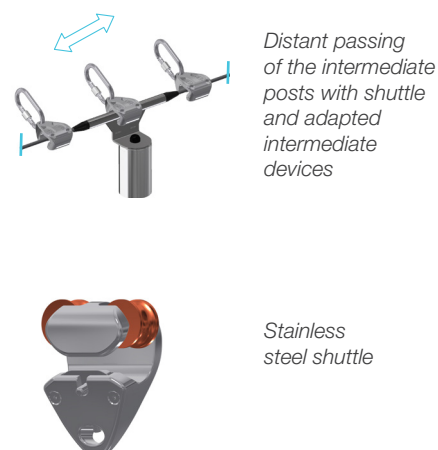
## Dimensions



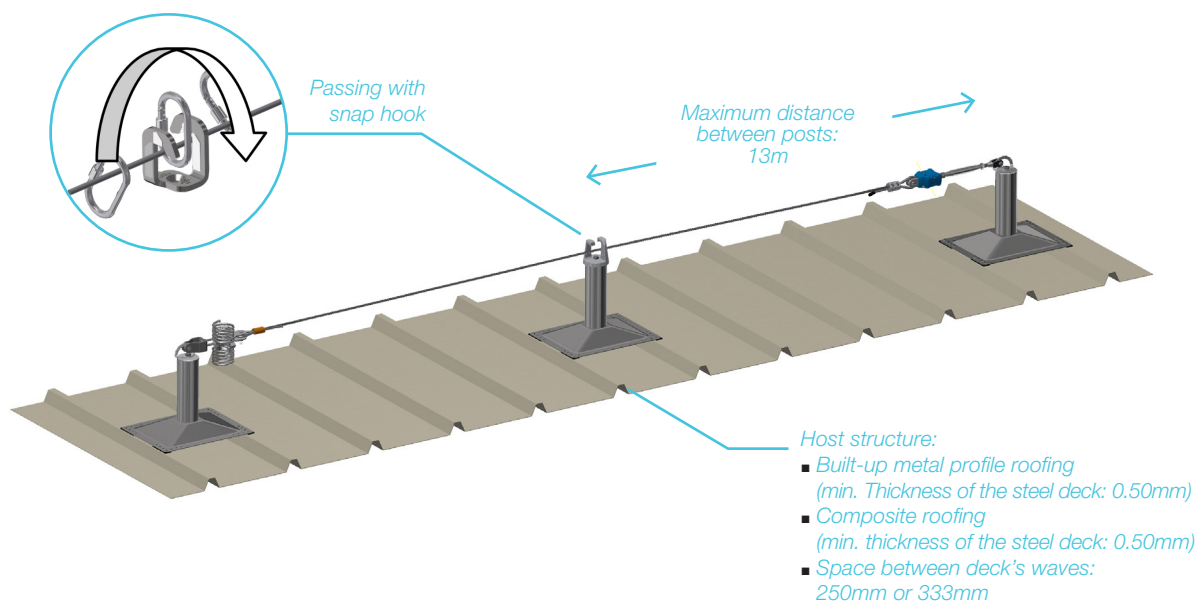
## Accessories



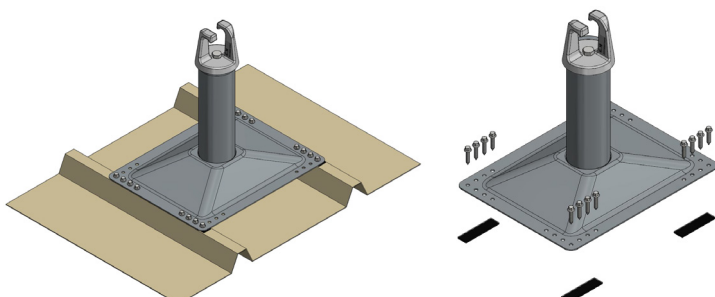
## Option



# LIFELINE FOR COMPOSITE AND BUILT-UP METAL PROFILES ROOFING

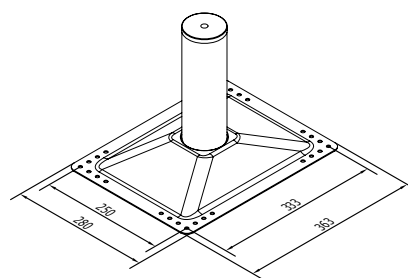


## Fixing



- Fixing with 16 auto-drilling screws equipped with waterproof washers
- Waterproofing assured by EPDM washers and EPDM adhesive tape

## Dimensions

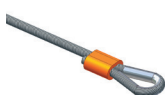


Absorber post

## Accessories



Stainless steel  
Intermediate device



Stainless steel  
cable Ø8



Energy absorber



Tensor + Pre-adjustor

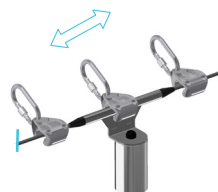


Device for manual  
crimping

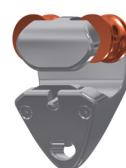


Corner device

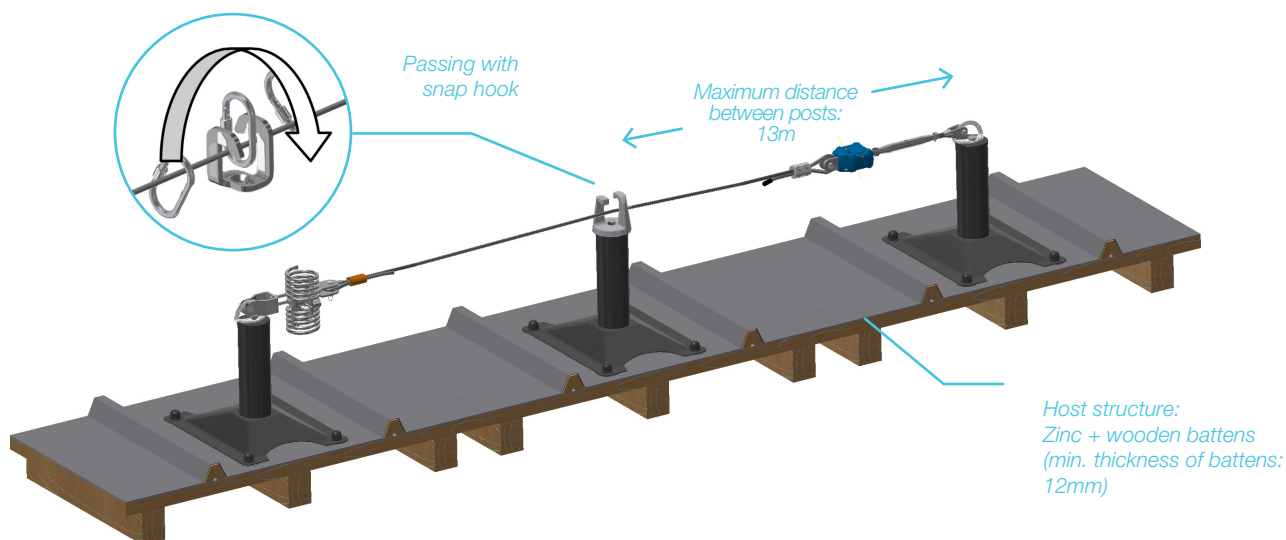
## Option



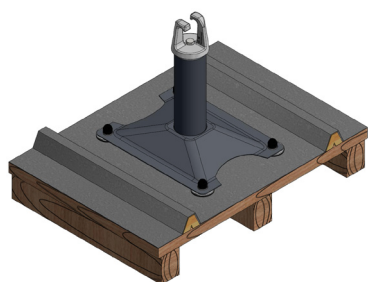
Distant passing  
of the intermediate  
posts with shuttle  
and adapted  
intermediate  
devices



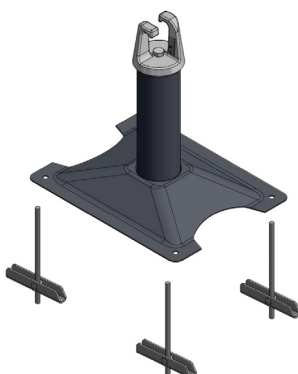
Stainless  
steel shuttle



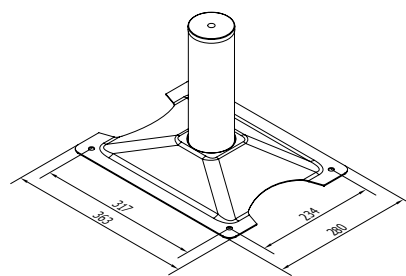
## Fixing



- Drilling of 4 Ø25 mm holes
- Fixing with 4 gravity toggles
- Waterproofing assured by EPDM washers



## Dimensions



Absorber post

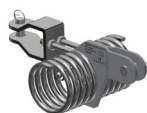
## Accessories



Stainless steel  
Intermediate device



Stainless steel  
cable Ø8



Energy absorber



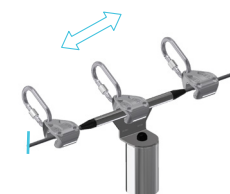
Tensor + Pre-adjustor



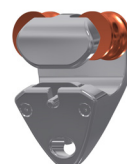
Device for manual  
crimping



Corner device



Distant passing  
of the intermediate  
posts with shuttle  
and adapted  
intermediate  
devices

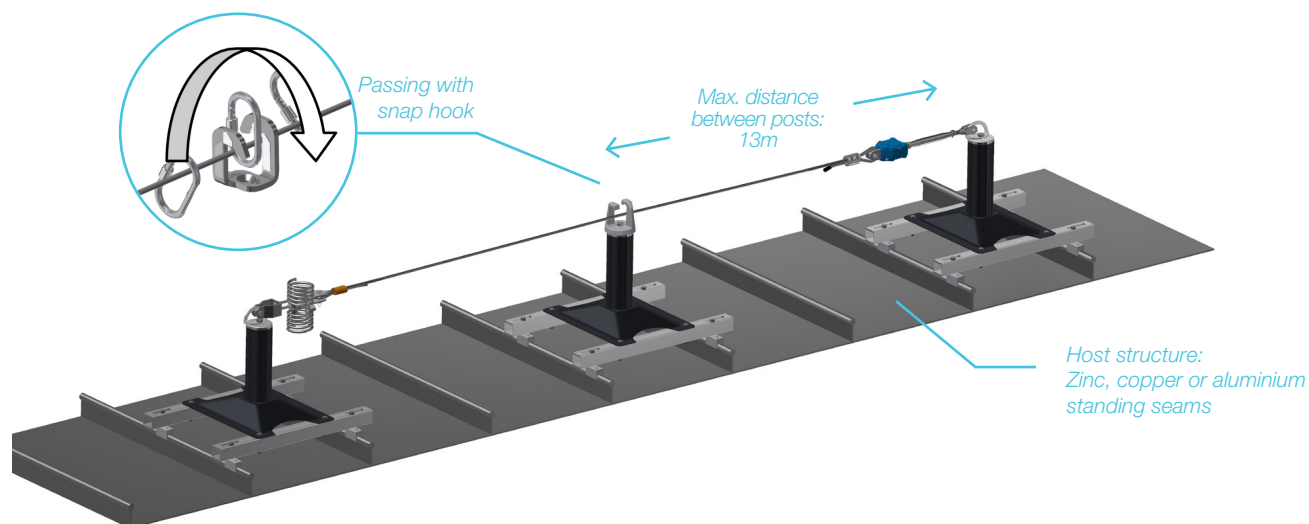


Stainless  
steel shuttle

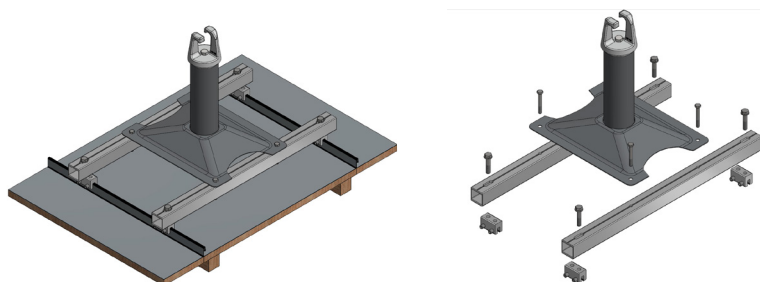
## Option

## LIFELINES ON ABSORBER POSTS

# LIFELINE FOR STANDING SEAMS ROOFING

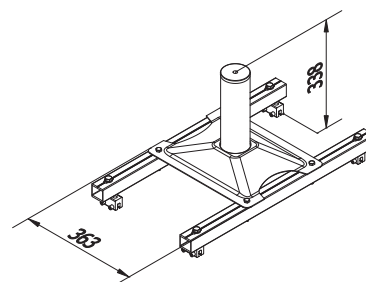


## Fixing



■ Fixing by tightening 4 clamps on the roofing seams

## Dimensions



Absorber post

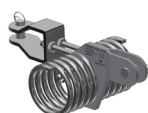
## Accessories



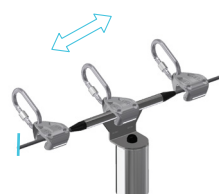
Stainless steel  
Intermediate device



Stainless steel  
cable Ø8



Energy absorber



Distant passing  
of the intermediate  
posts with shuttle  
and adapted  
intermediate  
devices



Tensor + Pre-adjustor



Device for manual  
crimping



Corner device

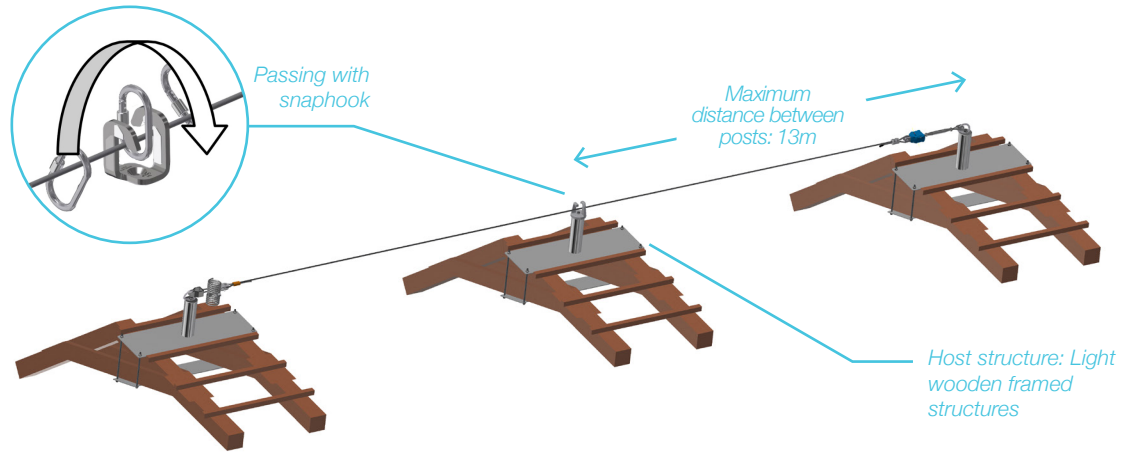


Stainless  
steel shuttle

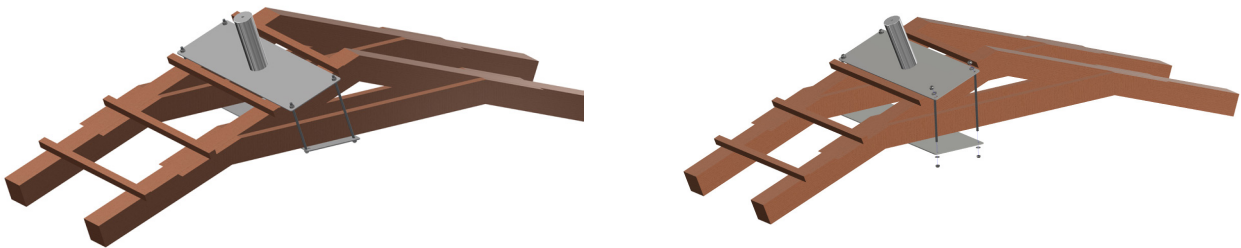
## Option

## LIFELINES ON ABSORBER POSTS

# LIFELINE ON WOODEN FRAMED STRUCTURES – MADE TO MEASURE



## Fixing



- Fixing by clamping two beams with a counterplate and 4 threaded rod M10 + nuts and bolts
- Space between the beams and their width must be approved by our engineers

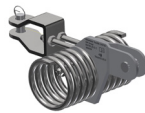
## Accessories



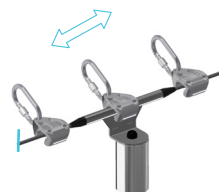
Stainless steel  
Intermediate device



Stainless steel  
cable Ø8



Energy absorber



Distant passing of  
the intermediate  
intermediate posts  
with shuttle and  
adapted  
intermediate  
devices



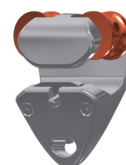
Tensor + pre-adjustor



Device for manual  
crimping



Corner device



Stainless  
steel shuttle

## Option



## LIFELINES ON ON BASEPLATES

LIFELINES ON ON BASEPLATES

A COMPLETE  
RANGE  
EXCLUSIVELY  
AIMED  
AT PROFESSIONALS





## RAPID TRACEABILITY SYSTEM

S.T.R.®

Each GM's anchor device is supplied with an identification target displaying a QR code. By scanning the QR code with a smartphone or a tablet, the user obtains directly all the technical information about the anchor device and its installation, via a web application developed for GM.

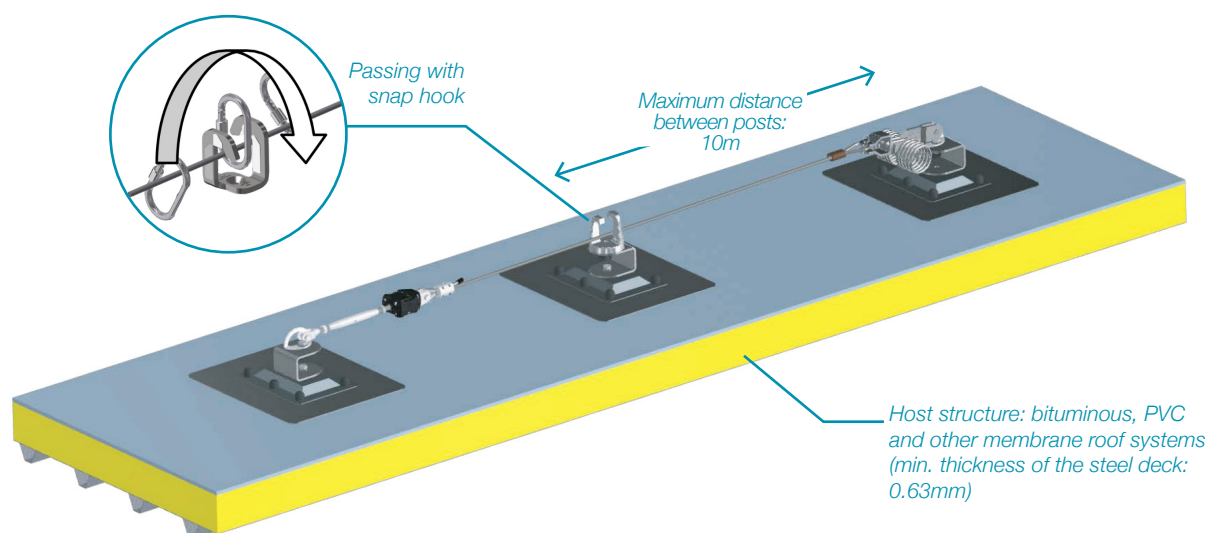


- The S.T.R.® is a new identification and traceability system solely aimed at GM's anchor devices.
- The S.T.R.® meets the requirements of the new standard EN 795: 2012 concerning the identification and the documentation of anchor devices.
- The S.T.R.® gives access to all the technical information about the anchor device (manual user, technical file, schematic drawing, pictures of installation, etc.):
  - Directly on site
  - To all the operators (supervising office, user, installer, etc.).
- The S.T.R.® web application enables to update at any moment and in real time information about the anchor system even when already delivered and/ or installed.
- The S.T.R.® optimizes the management of anchor devices with the display and the registration of intervention dates (installation, entry into service, last and next maintenance).



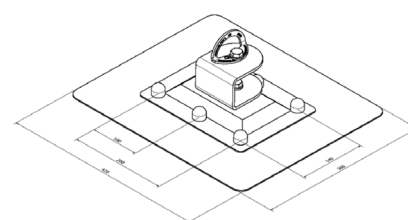
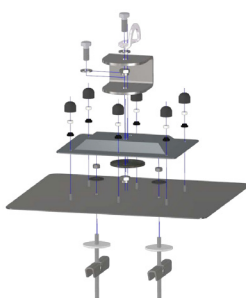
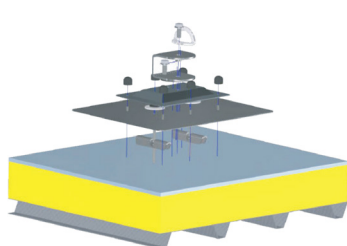
## LIFELINES ON BASEPLATES

# LIFELINE FOR STEEL DECK FLAT ROOFING



## Fixing

## Dimensions



Baseplate

- Fixing of the counter plate with 2 gravity toggles
- Welding of an extra layer of membrane over the counter
- Bolting of the baseplate on the waterproof counterplate
- Maximum total thickness of the complex: 180mm

## Accessories

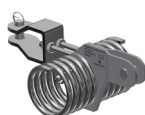
## Option



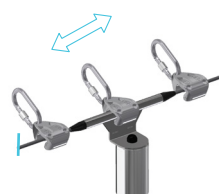
Stainless steel  
Intermediate device



Stainless steel  
cable Ø8



Energy absorber



Distant passing  
of the intermediate  
posts with shuttle  
and adapted  
intermediate  
devices



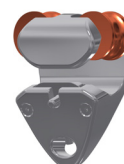
Tensor + Pre-adjustor



Device for manual  
crimping



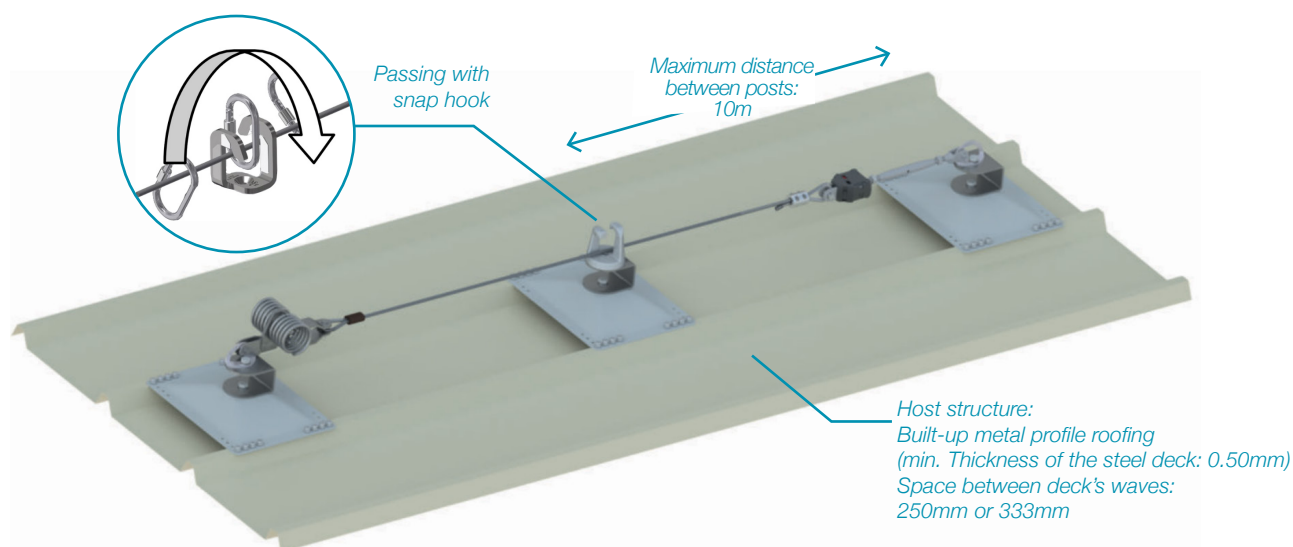
Corner device



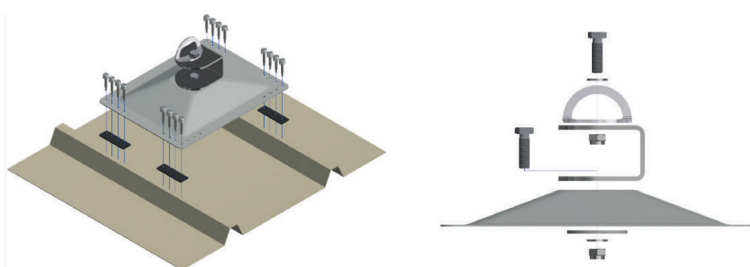
Stainless  
steel shuttle

## LIFELINES ON BASEPLATES

# LIFELINE FOR COMPOSITE AND BUILT-UP METAL PROFILES ROOFING

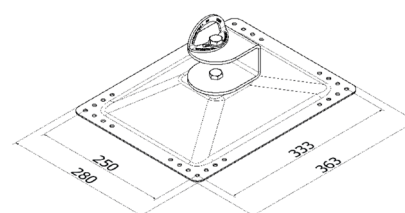


## Fixing



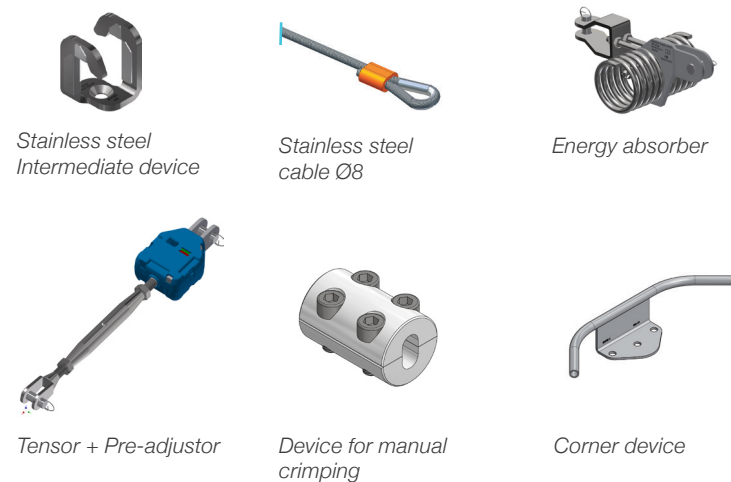
- Fixing with 16 auto-drilling screws equipped with waterproof washers
- Waterproofing assured by EPDM washers and EPDM adhesive tape

## Dimensions

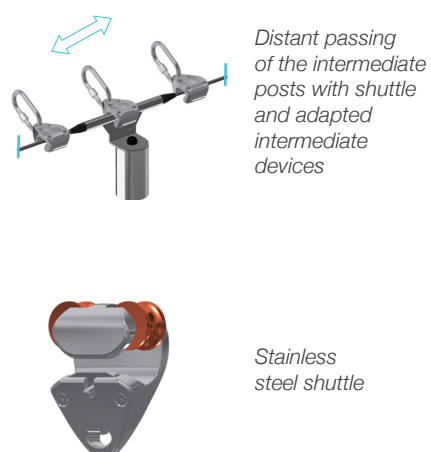


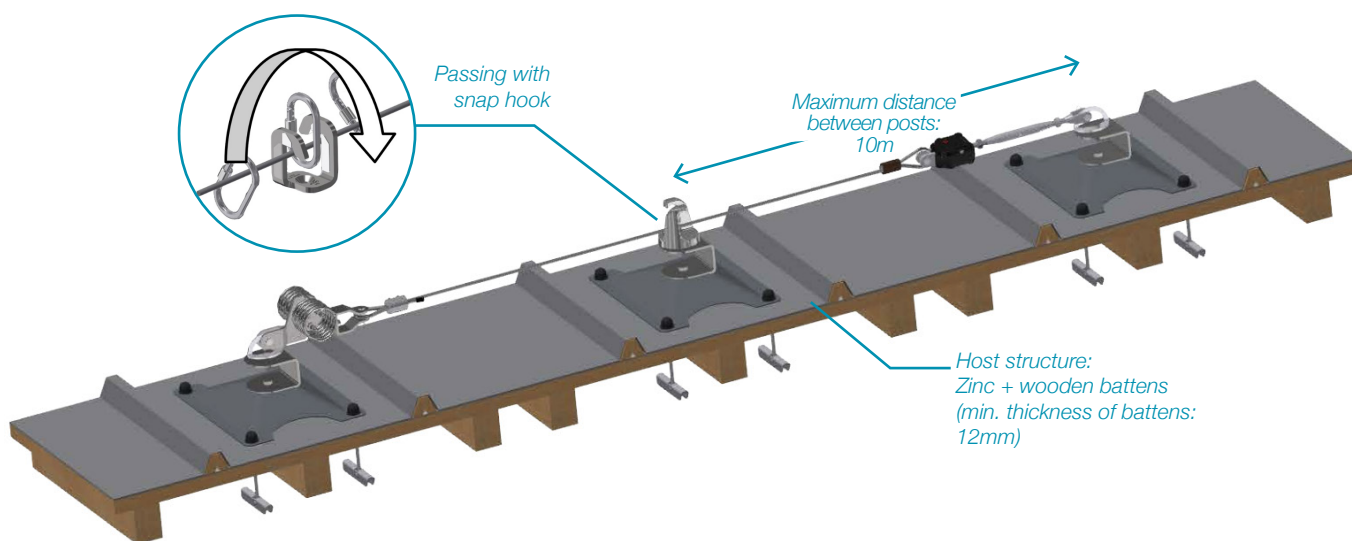
Baseplate

## Accessories



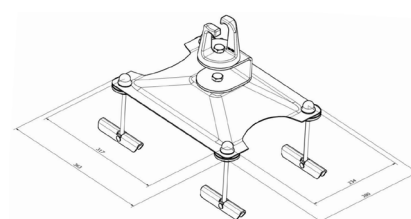
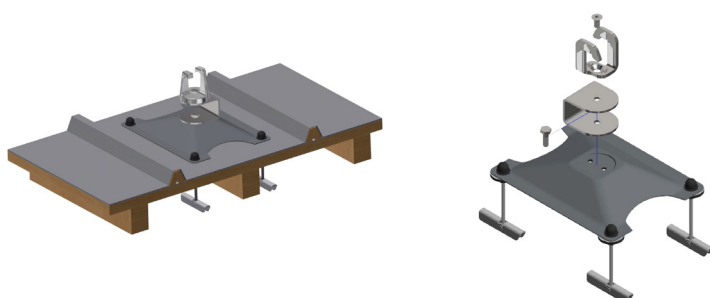
## Option





### Fixation

### Dimensions

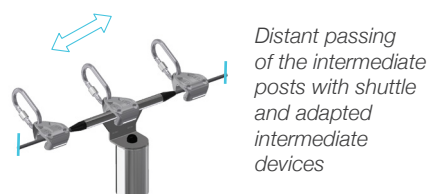
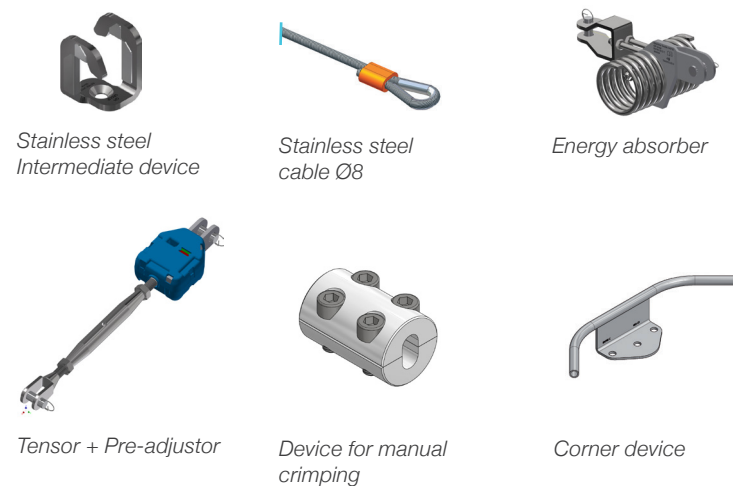


Baseplate

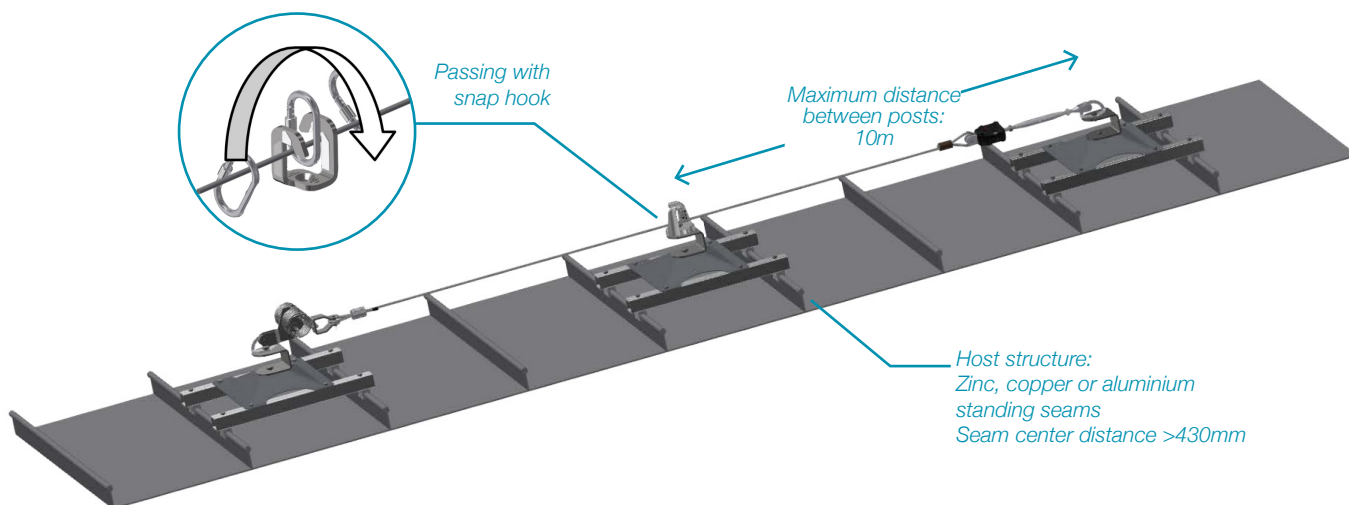
- Drilling of 4 Ø25 mm holes
- Fixing with 4 gravity toggles
- Waterproofing assured by EPDM washers

### Accessories

### Option

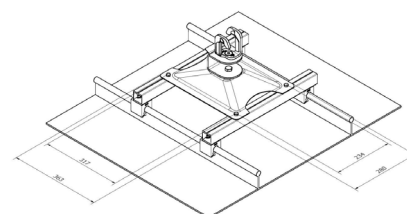
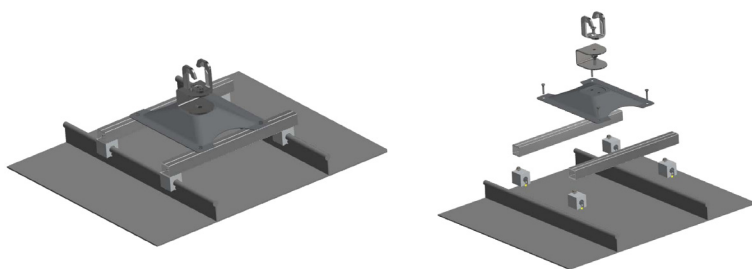


Stainless steel shuttle



### Fixing

### Dimensions

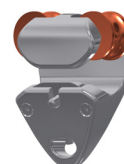
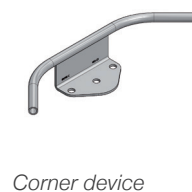
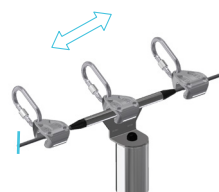


Baseplate

- Fixing by tightening 4 clamps on the roofing seams

### Accessories

### Option





## GUARDRAIL AND ROOF ACCESS

A COMPLETE  
RANGE  
EXCLUSIVELY  
AIMED  
AT PROFESSIONALS





## GUARDRAIL AND ROOF ACCESS

# FREESTANDING T22 - ALUMINIUM (COMPLIES EN 14122-3)

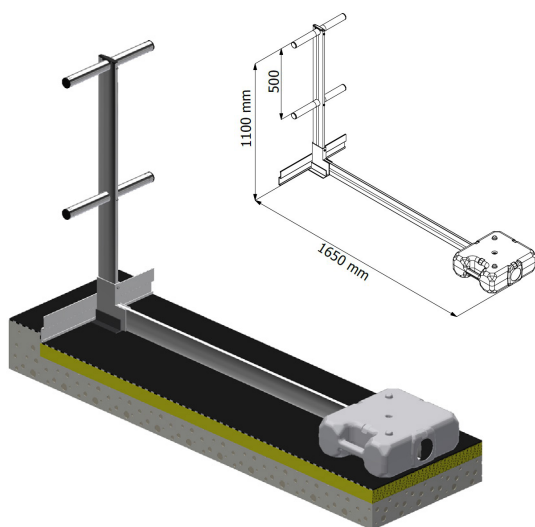


GM handrail, vertical or inclined at 22°, is installed on the periphery of inaccessible technical terraces to protect operators during maintenance operations.

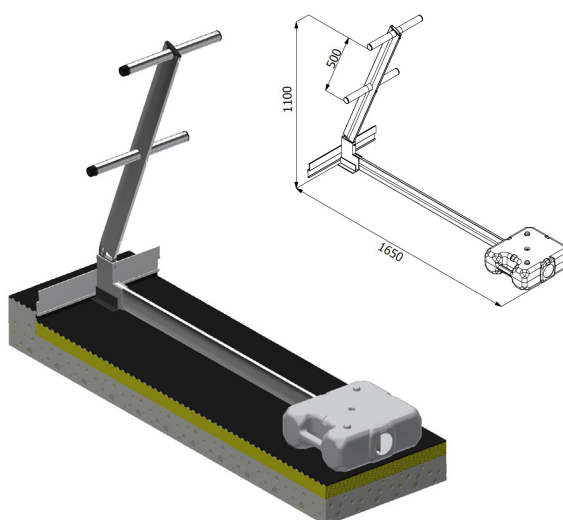
This device can be installed on roofs with parapets and is available in raw, powder coated and anodized version.

It complies with the European standard EN 14122-3 with a space of 1.40m between supports.

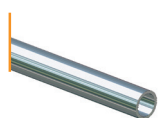
### VERTICAL support



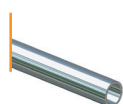
### INCLINED support



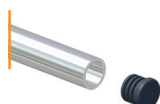
## Accessories



Aluminium superior rails  
Diameter = 38.6 mm  
(L=3000mm)



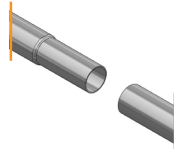
Aluminium inferior rails  
Diameter = 28.4 mm  
(L=3000mm)



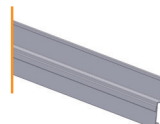
Polythene finishing caps



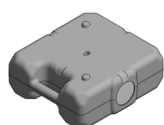
Articulated polythene angle sleeve



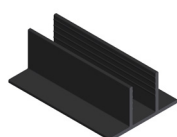
Connection of the railings with necked in extremity



Aluminium skirting  
(L=3000mm)



Counterweight  
(25kg)



Protective EPDM soles

## Available versions

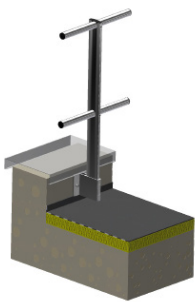
	Aluminium freestanding guardrail Aluminium support
Straight support	✓
Inclined support	✓
Powder coating	✓
Anodization	✓
Collapsible	✓

### Préconisations

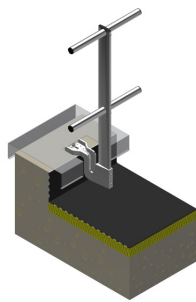
GM fixed handrail, vertical or inclined at 22°, is installed on the periphery of inaccessible technical terraces to protect operators during maintenance operations.

This device can be installed on roofs with parapets and is available in raw, powder coated and anodized version.

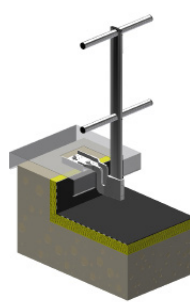
It complies with both the French standard NF85015 and the european standard EN 14122-3 with a space of 1.50m between supports.



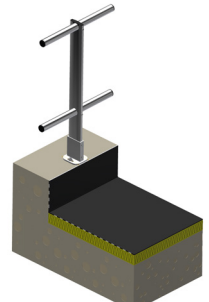
*Vertical plate fixing,  
straight support*



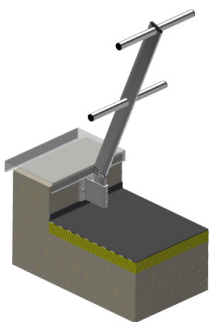
*Fixing under covering  
(parapet without insulation)  
Straight support*



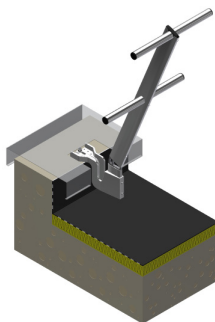
*Fixing under covering  
(parapet with insulation)  
Straight support*



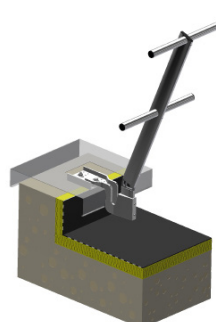
*Fixing on top of parapet  
Straight support*



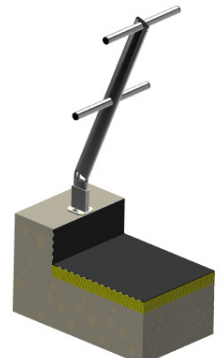
*Vertical plate fixing,  
inclined support*



*Fixing under covering  
(parapet without insulation)  
Inclined support*



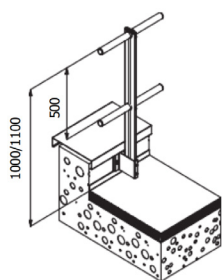
*Fixing under covering  
(parapet with insulation)  
Inclined support*



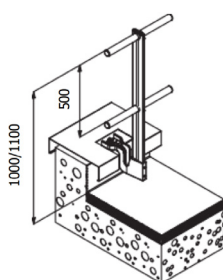
*Fixing on top of parapet  
Inclined support*



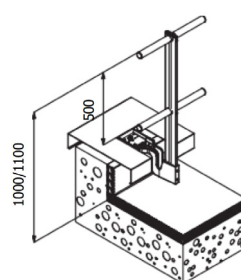
## Dimensions



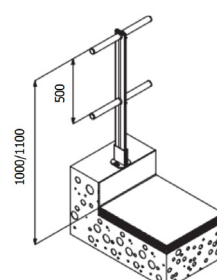
### Vertical plate fixing



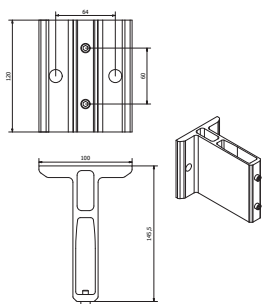
*Fixing under covering  
(parapet without insulation)*



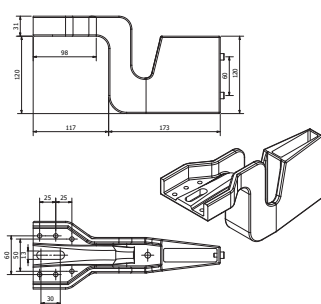
*Fixing under covering  
(parapet with insulation)*



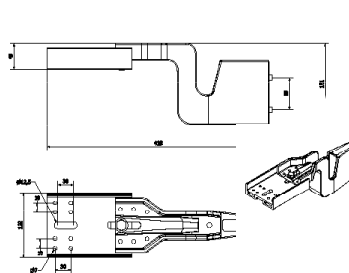
*Fixing on top of parapet*



*Vertical plate*



Standard Z plate



### Extended Z Plate

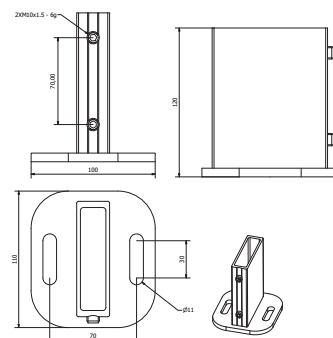
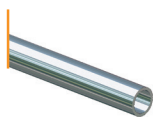
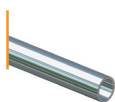


Plate fixing on top

## Accessories



Aluminium  
superior rails  
Diameter = 38.6mm  
(L=2900mm)



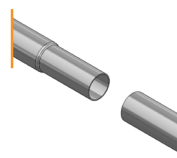
Aluminium  
inferior rails  
Diameter = 28.4mm  
(L=2900mm)



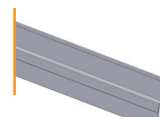
Polythene  
finishing caps



Articulated  
polythene angle  
sleeve



Connection of the railings with necked in extremity



Aluminium skirting  
( $L=3000\text{mm}$ )



*Inclination bend*

## Technical Characteristics

	Roof terrace with parapet	Roof terrace without parapet	Metal profiled roofing
Host structure	<input checked="" type="checkbox"/>	<input type="checkbox"/>	<input type="checkbox"/>

	Side of parapet	On top of parapet	Under covering	Screws and bolts + EPDM washers
Type of fixing	<input checked="" type="checkbox"/>	<input checked="" type="checkbox"/>	<input checked="" type="checkbox"/>	<input type="checkbox"/>

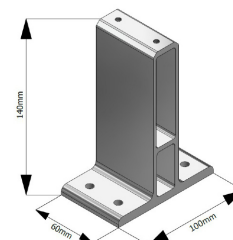
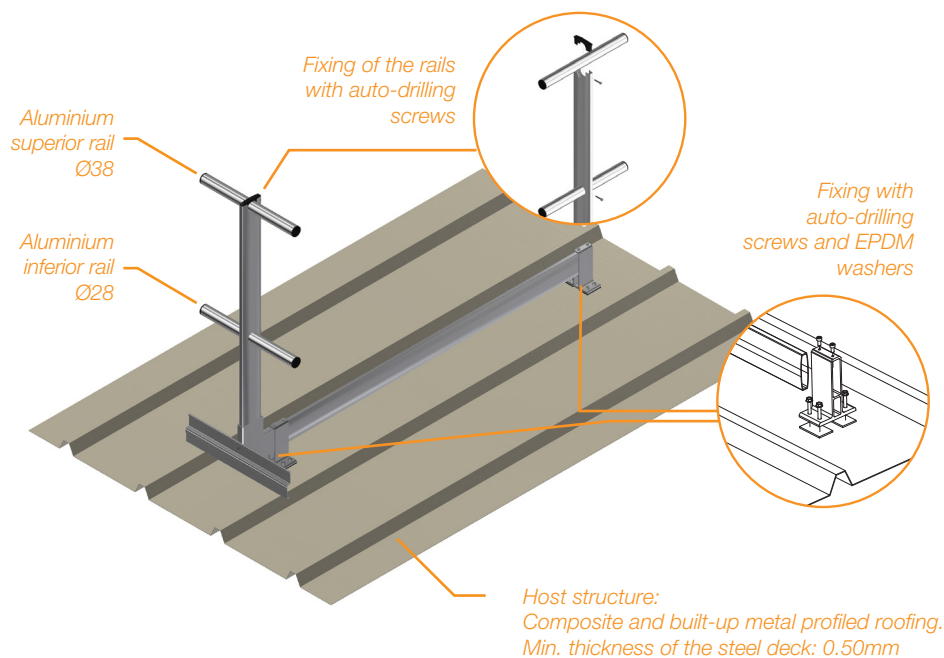
<i>Intervention needed on waterproofing complex</i>	<i>Oui</i>

	Aluminium	Hot dip galvanized steel
<i>Material</i>	<input checked="" type="checkbox"/>	<input type="checkbox"/>

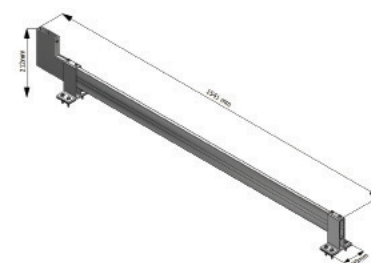
<i>Adjustable height of the railings</i>	No

## GUARDRAIL

# FIXED ON THE FLAT PART OF STEEL DECK

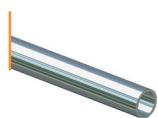


Fixing plate for steel deck

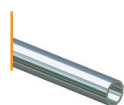


Support leg

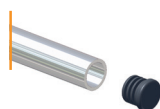
## Accessories



Aluminium superior rails  
Diameter = 38,6 mm  
(L=3000mm)



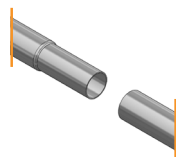
Aluminium inferior rails  
Diameter = 28,4 mm  
(L=3000mm)



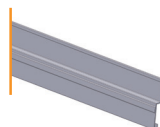
Polythene finishing  
caps



Articulated  
polythene angle  
sleeve



Connection of the  
railings with necked  
in extremity



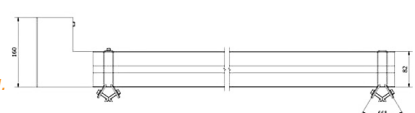
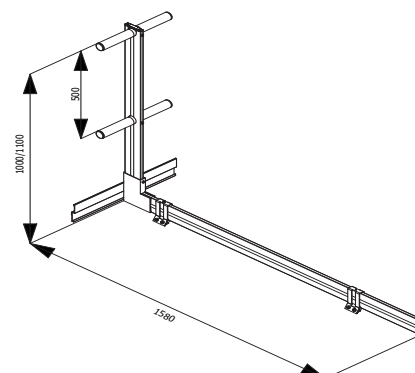
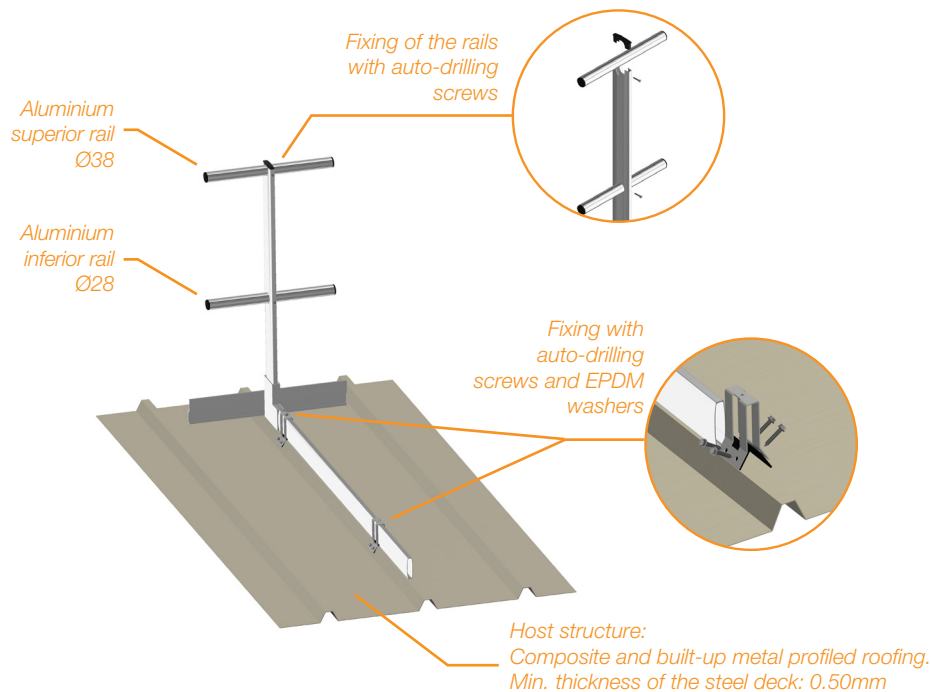
Aluminium skirting  
(L=3000mm)

## Available versions

	Aluminium guardrail on steel deck
Straight support	<input checked="" type="checkbox"/>
Inclined support	<input checked="" type="checkbox"/>
Powder coating	<input checked="" type="checkbox"/>
Anodization	<input checked="" type="checkbox"/>

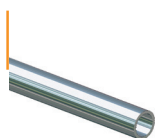
## GUARDRAIL

# FIXED ON THE WAVE OF STEEL DECK

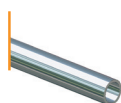


Support leg and mounting brackets

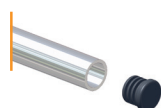
## Accessories



Aluminium superior rails  
Diameter = 38,6 mm  
(L=3000mm)



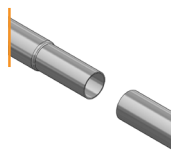
Aluminium inferior rails  
Diameter = 28,4 mm  
(L=3000mm)



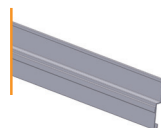
Polythene finishing caps



Articulated polythene angle sleeve



Connection of the railings with necked in extremity



Aluminium skirting  
(L=3000mm)

## Available versions

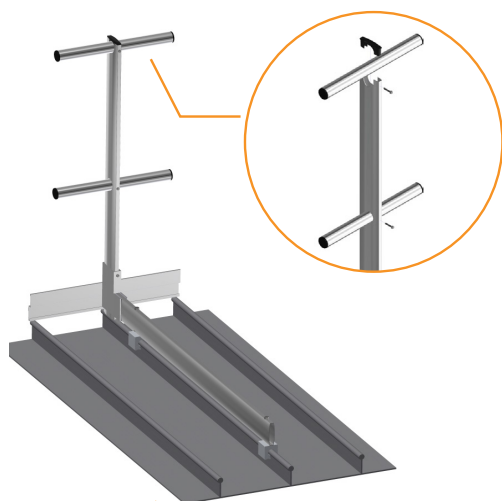
	Aluminium guardrail on steel deck
Straight support	✓
Inclined support	✓
Powder coating	✓
Anodization	✓

## GUARDRAIL

# ON STANDING SEAMS



### VERTICAL support



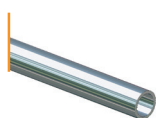
Host structure:  
standing seams roofing  
(aluminium or zinc)

### INCLINED support

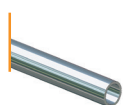


Host structure:  
standing seams roofing  
(aluminium or zinc)

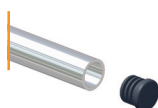
## Accessories



Aluminium superior rails  
Diameter = 38,6 mm  
(L=3000mm)



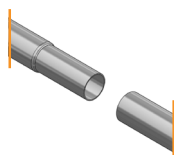
Aluminium inferior rails  
Diameter = 28,4 mm  
(L=3000mm)



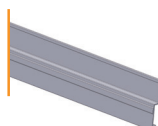
Polythene finishing  
caps



Articulated  
polythene angle  
sleeve



Connection of the  
railings with necked  
in extremity



Aluminium skirting  
(L=3000mm)

## Available versions

	Aluminium standing seams guardrail
Vertical support	<input checked="" type="checkbox"/>
Inclined support	<input checked="" type="checkbox"/>
Powder coating	<input checked="" type="checkbox"/>
Anodization	<input checked="" type="checkbox"/>

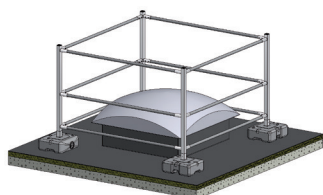


## GUARDRAIL

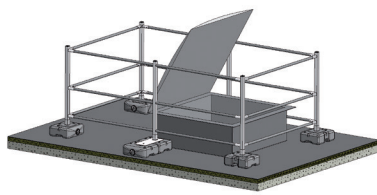
# SKYLIGHT PROTECTION



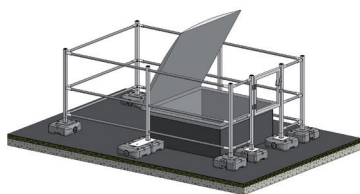
## Dimensions



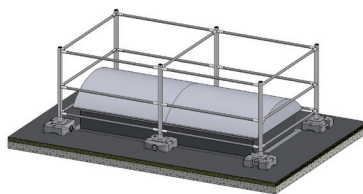
*Standard kit  
(Skylight max. dimensions:  
1200x1200mm)*



*Opening kit  
(Skylight max. dimensions:  
1200x1200mm)*

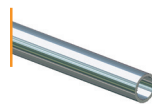


*Opening kit with gate  
(Skylight max. dimensions:  
1200x1200mm)*

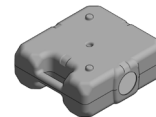


*Large size kit  
(Skylight max. dimensions:  
1200x2500mm)*

## Accessories



*Aluminium rails  
(L=3000mm)*



*Counterweight  
(25kg)*



*Protective EPDM soles*

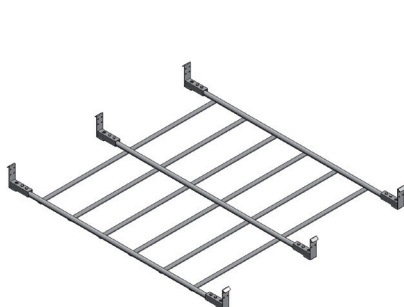


*Aluminium support*

## Available versions

	Guardrail Skylight protection
Powder coating	<input checked="" type="checkbox"/>
Anodization	<input checked="" type="checkbox"/>

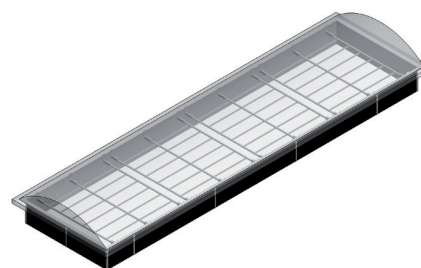
## Fall protection grill



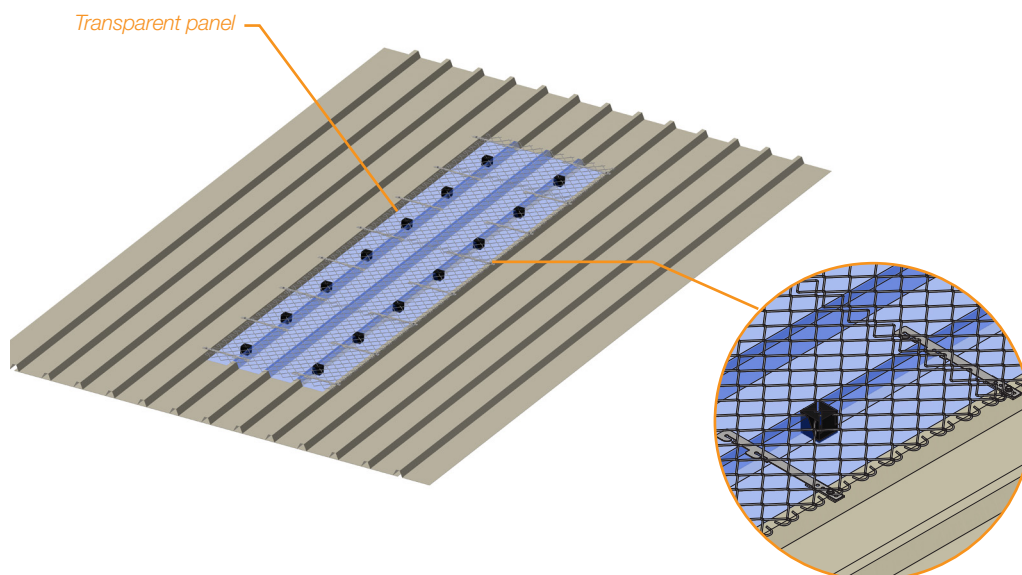
*Aluminium fall protection  
grill, fixing to the kerb.  
Grill min. dimensions: 500 x 750 mm  
Grill max. dimensions: 1000 x 2000 mm*



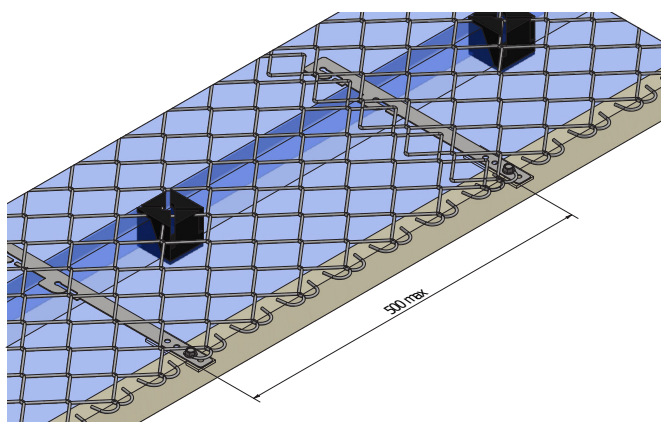
*Application example  
for opening skylight.*



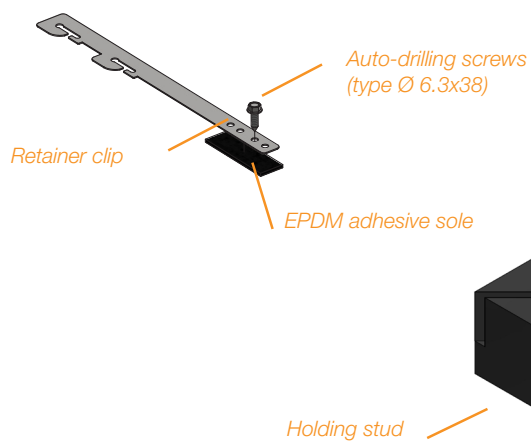
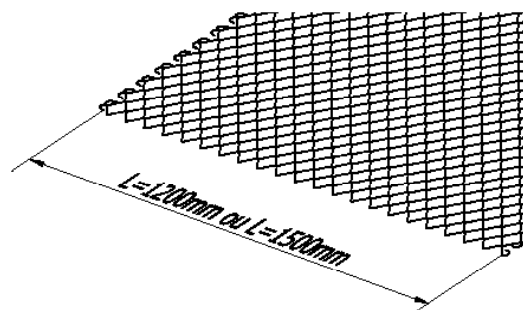
*Application example  
for large size skylight.*



## Fixing



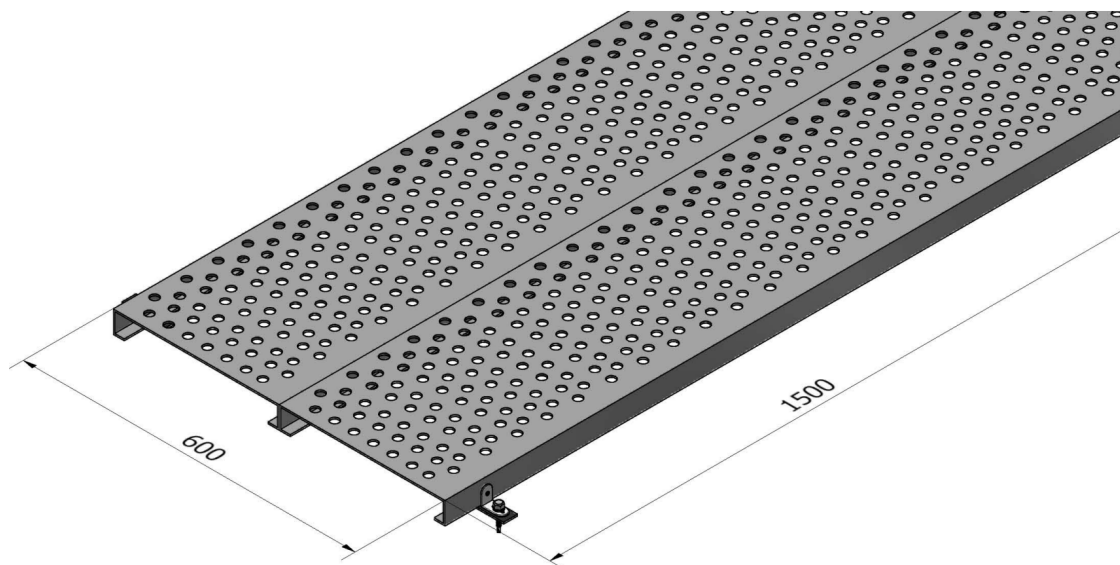
## Dimensions



- Galvanized steel, simple torsion grill, 50mm square mesh, 3mm wire.
- Exists in 2 widths (1200mm or 1500mm).
- 1 retainer clip to fit a width between 1085mm and 1672mm.
- Exists in length of 1m up to 25m.
- Min. thickness of the steel deck: 0.50mm.



Translucent panels on roofs represent an obstacle and a major risk of falling, as they are difficult to distinguish from the rest of the roof. In general, these panels are made of fragile materials such as polyester or polycarbonate, which are not designed to support the weight of a person. Technical walkways are designed to pass through translucent panels and move across the entire roof, whether it is made of concrete, profiled sheet or sandwich panels. They offer a safe, easy-to-install solution.



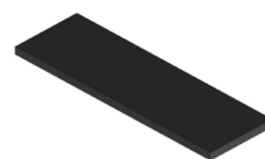
## Accessories



Aluminium steps



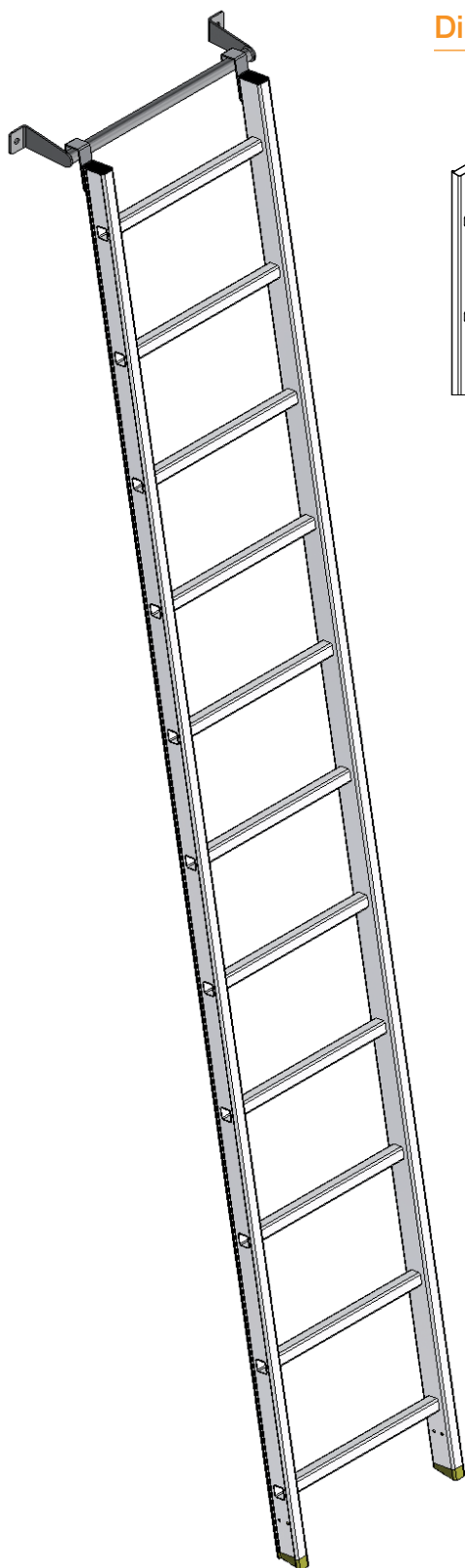
Fixing bracket



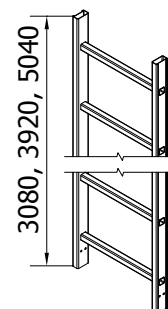
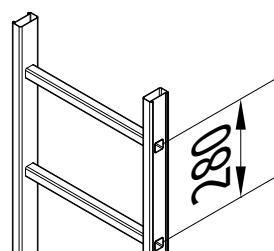
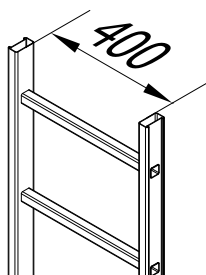
Fixing sole

## Technical details

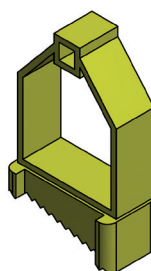
- Anodised aluminium steps, 3 mm thick folded sheet metal.
- Walkway made up of steps 300 mm wide and 1500 mm long.
- Slip resistance class R11, inclinations up to 27°, in accordance with DIN51130.
- Walkways 300/600/900 mm wide.
- Aluminium components for easy handling and installation.
- Fixing to sheet metal with a minimum thickness of 0.5 mm.



## Dimensions



## Accessories



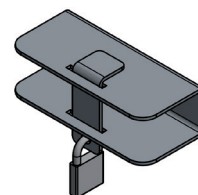
Anti-slippery  
protection



Hanging bar



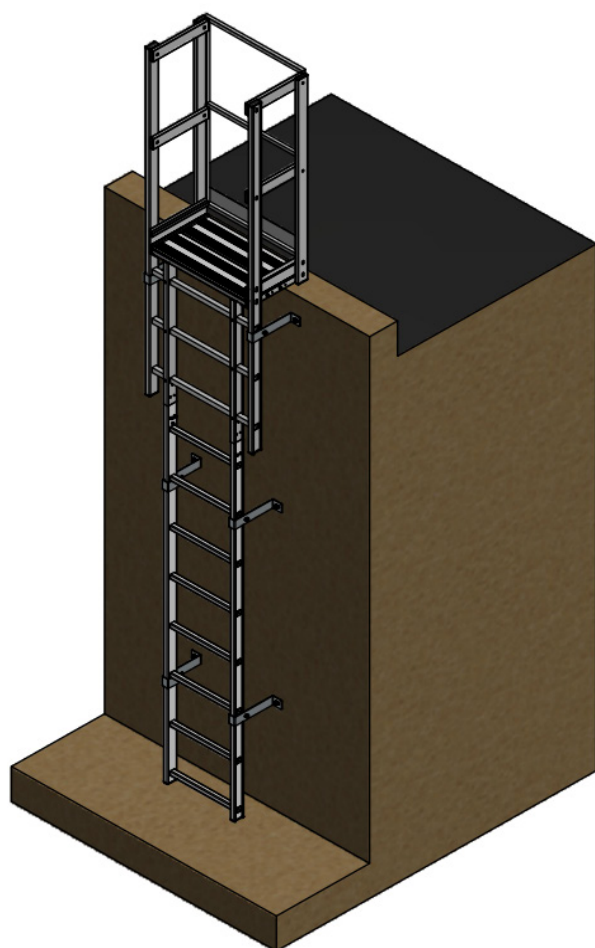
Hook for hangbar  
Fixing on wall



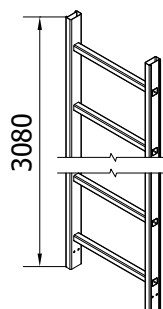
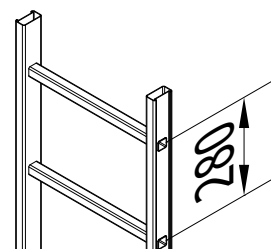
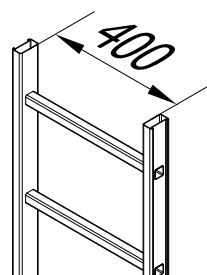
Anti-theft system  
with padlock

## ROOF ACCESS

# FIXED LADDER



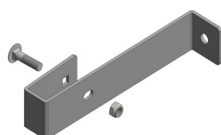
## Dimensions



## Accessories



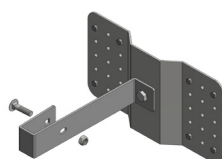
Front exit with landing step and gate



Standard fixing bracket (L=250mm)

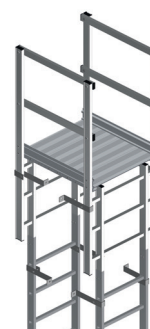
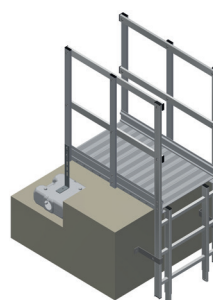


Adjustable fixing bracket (250mm < L < 400mm)

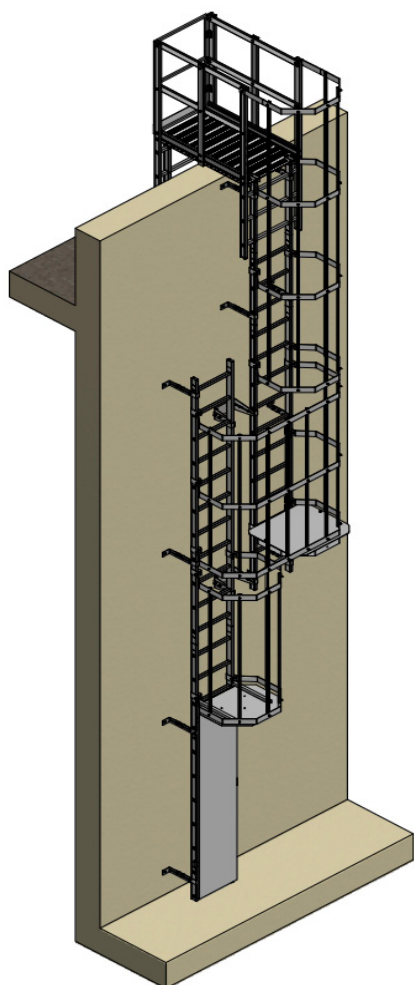


Cladding fixing bracket

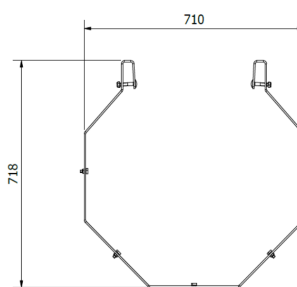
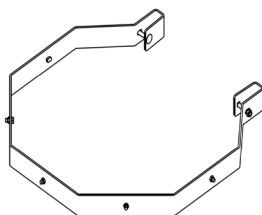
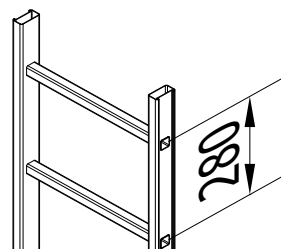
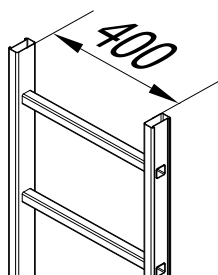
## Option



Parapet stepover



## Dimensions



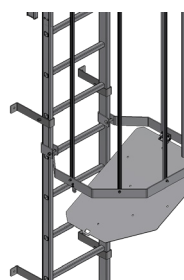
## Accessories



Front exit with landing  
step and gate



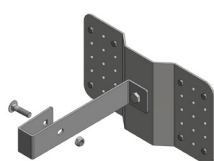
Parapet stepover



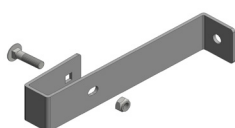
Safety trapdoor



Changing flights platform



Cladding fixing bracket



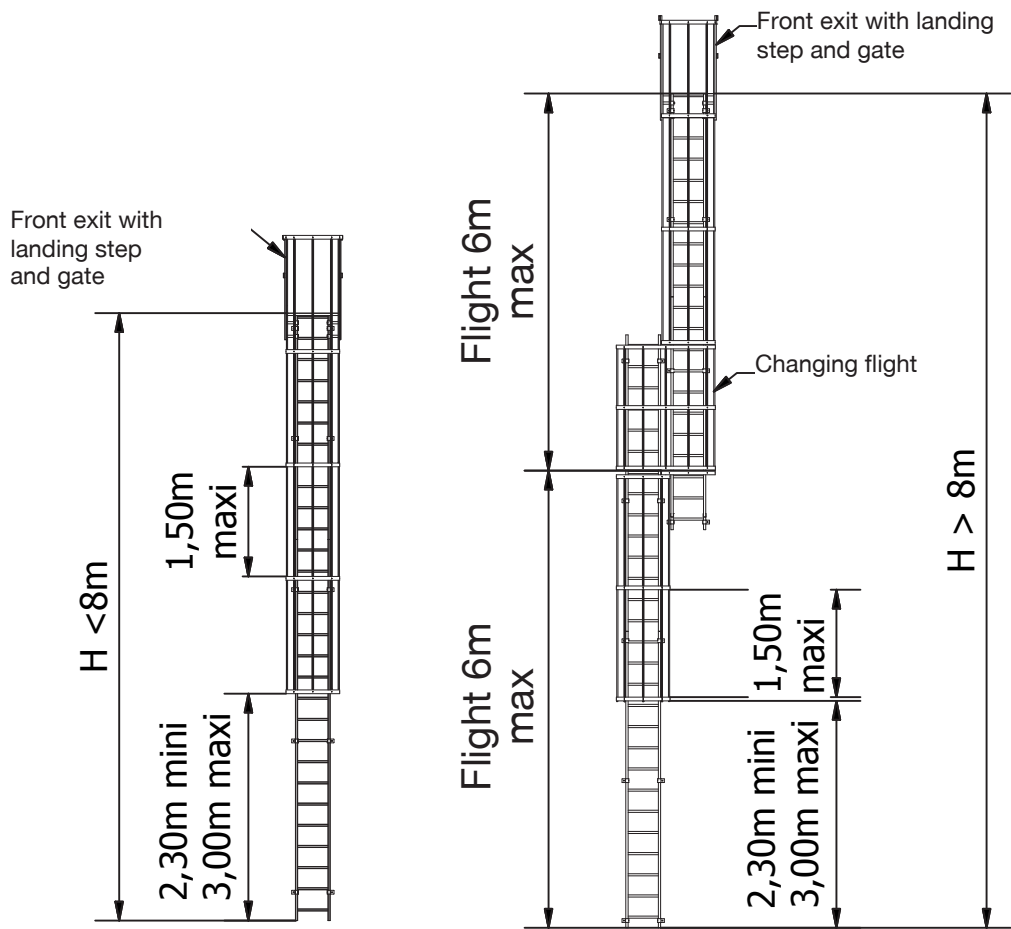
Standard fixing bracket  
(L=250mm)



Adjustable fixing bracket  
(250mm < L < 400mm)



Standard specifications



**GM CROSS OVER STAIRWAYS** allow a secure crossing for industrial installations, technical premises and technical terraces. The installation on-site is simpler and more modular thanks to the lightness of aluminium.

## CROSS OVER STAIRWAYS

### Fixing on structure

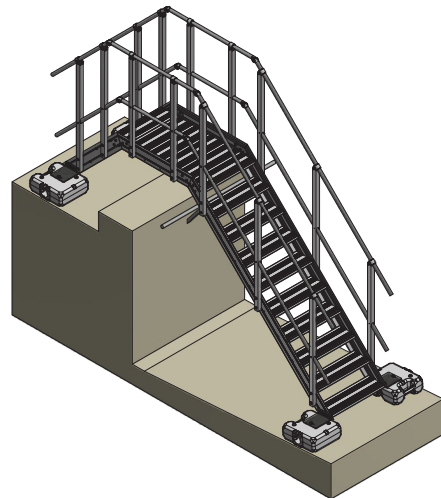
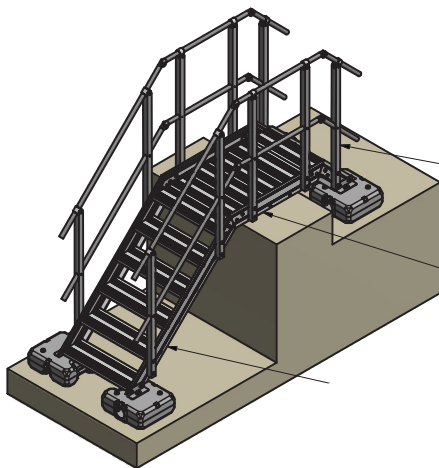


## CROSS OVER STAIRWAYS

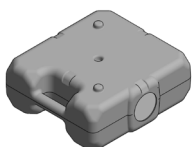
### Fixing on concrete counterweights



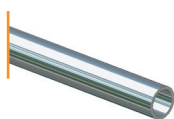
*Examples of asymmetrical cross over stairways*



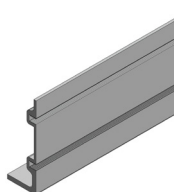
## Components



Concrete counterweights



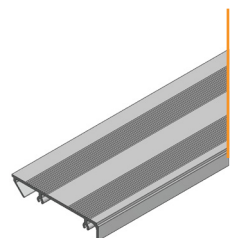
Aluminium rails



Skirting support



Guardrail support

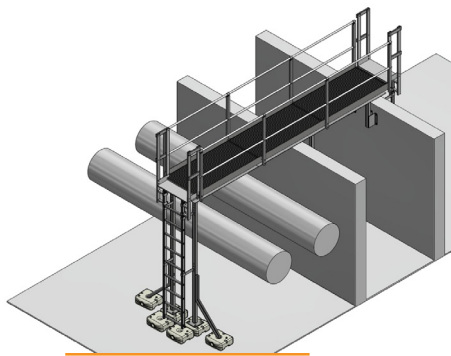


Step and platform support

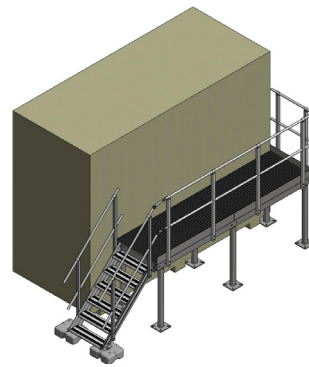


Our engineering department works on specific access and work at height solutions, in line with your movement requirements and your safety procedure expectations. For any specific request, please contact us.

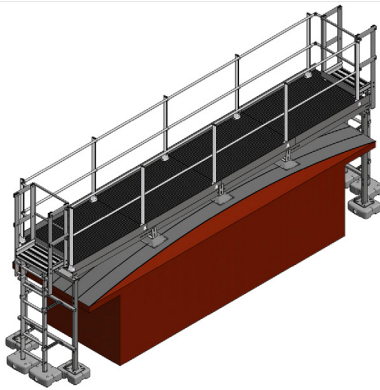
## EXAMPLES OF SPECIFIC PLATFORMS AND GATEWAYS



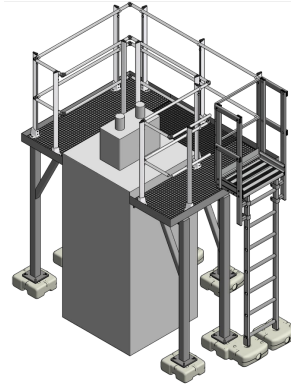
*Gateway above ducts*



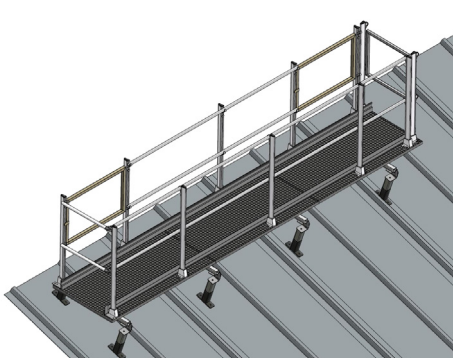
*Platform sealed to the floor*



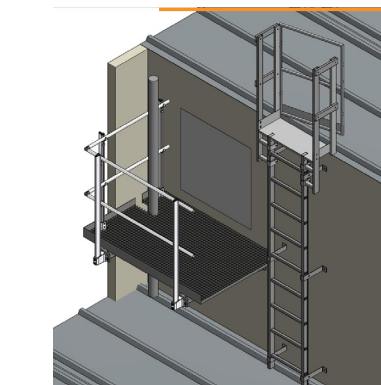
*Gateway on steel deck*



*Platform on chimney*



*Gateway on zinc roofing*

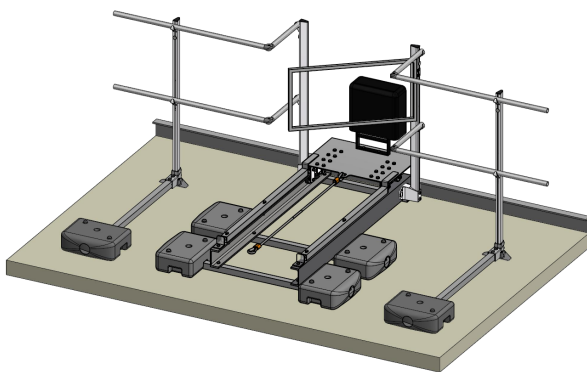


*Platform on zinc roofing*

Designed to be installed in addition to a guardrail, the rotating or sliding light support is used to carry out lighting maintenance operations safely.

### LIGHTING SUPPORT

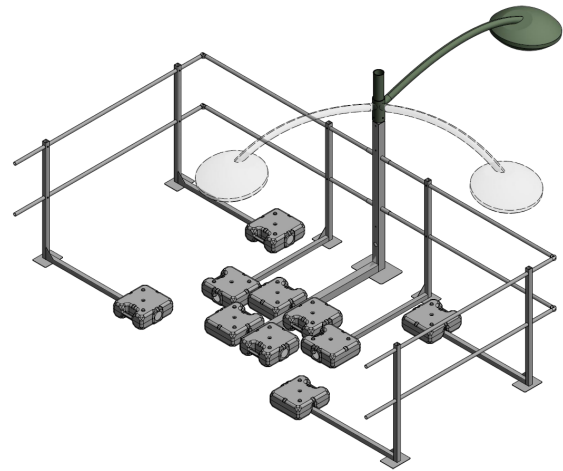
#### Sliding



*To ensure the maintenance operator is protected by the guardrail, the rolling platform is provided with a manual release system, sliding the platform towards the inside of the terrace.*

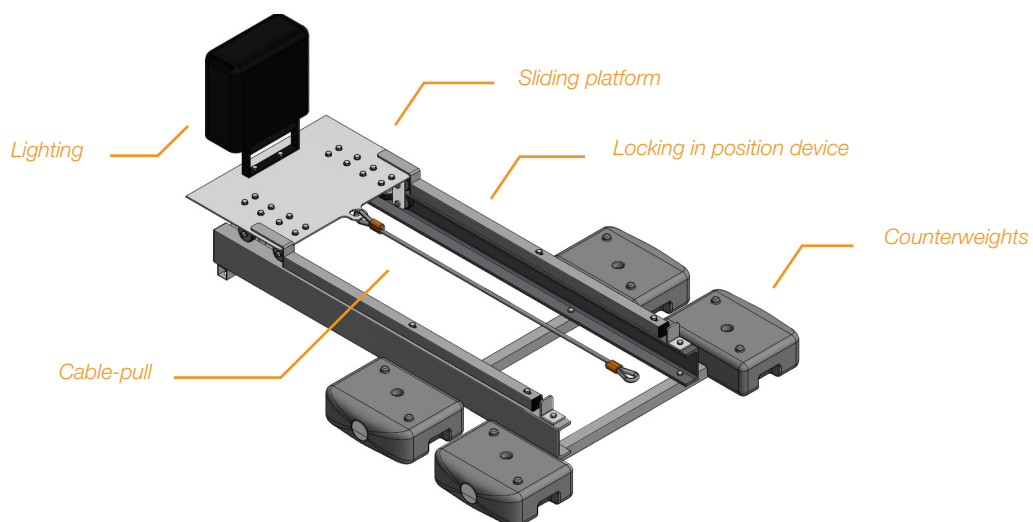
### LIGHTING SUPPORT

#### Rotating



*The lighting maintenance operator just needs to unlock the rotating mast to make it rotate towards the inside of the terrace. He can also realize the maintenance while protected by the guardrail.*

## Components





## PERSONAL PROTECTIVE EQUIPMENTS (P.P.E.) AND ACCESSORIES

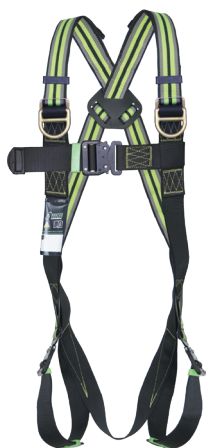
A COMPLETE  
RANGE  
EXCLUSIVELY  
AIMED  
AT PROFESSIONALS



## P.P.E. KITS

GM offers a range of P.P.E. fitted to all kind of work at height.

### Safety harness



Equipped with 3 points of attachment with 3 automatic connections. Adjustable straps on leg loops and shoulders, differentiated with 2 different colors.  
Automatic buckles in leg straps and sternal straps.  
Ref. FA 10 111 01



### Retractable fall arrester

Steel cable retractor



Webbing retractor

- **Cable:** Equipped with a polymer high resistance crankcase and a galvanized steel cable diam. 4.5 mm. Available in lengths of 7m. (3.44 kg.) and 10 m. (4.38 kg.).  
Ref. FA20 400 07 and FA 20 400 10
- **Tape:** Equipped with a polymer high resistance crankcase and a 25 mm polyester ribbon. Delivered with an external energy absorber connected to the end of the tape. Available in length 6 m (2.71kg.).  
Ref. FA 20 501 06



### Mobile fall arrester +safety lanyard (length 10m)



Works with a 12mm diameter braided polyester rope, and is supplied mounted inseparably with its webbing anchorage with energy absorber. Ref. FA 20 102 10



### Elastic safety lanyard (length 1.8m)



Polyester elastic webbing with 1.8mm energy absorber, width 45mm. Ref. FA 30 702 20



### Universal safety lanyard (length 1.5m)



Polyamide braided rope sling diam. 12mm. equipped with a webbing absorber 44mm width.  
Ref. FA 30 103 15



### Double safety lanyard (length 1.5m)



Polyamide braided rope sling diam. 12mm. equipped with a webbing absorber 44mm width.  
Ref. FA 30 200 15



## Kit 1

---

- Carrying bag
- Safety harness
- Mobile fall arrester  
+ safety lanyard 10m
- Snap hook



## Kit 2

---

- Carrying bag
- Safety harness
- Elastic safety  
lanyard 1.5m
- Snap hook



## Kit 3

---

- Carrying bag
- Safety harness
- Safety lanyard with  
energy absorber 1.5m
- Snap hook



## Kit 4

---

- Carrying bag
- Safety harness
- Double safety  
lanyard 1.5m
- Snap hook



## ANCHOR AND FIXING TESTER

On top of its anchorage range, GM provides you a tension tester to control easily and quickly the resistance of anchors on building sites.



The anchor and fixing tester is a portable device for performing anchor extraction tests.

Its main function is to confirm on site the resistance of anchors in building materials.

This device is required to ensure that an anchoring device is installed in accordance with the current standard EN795.

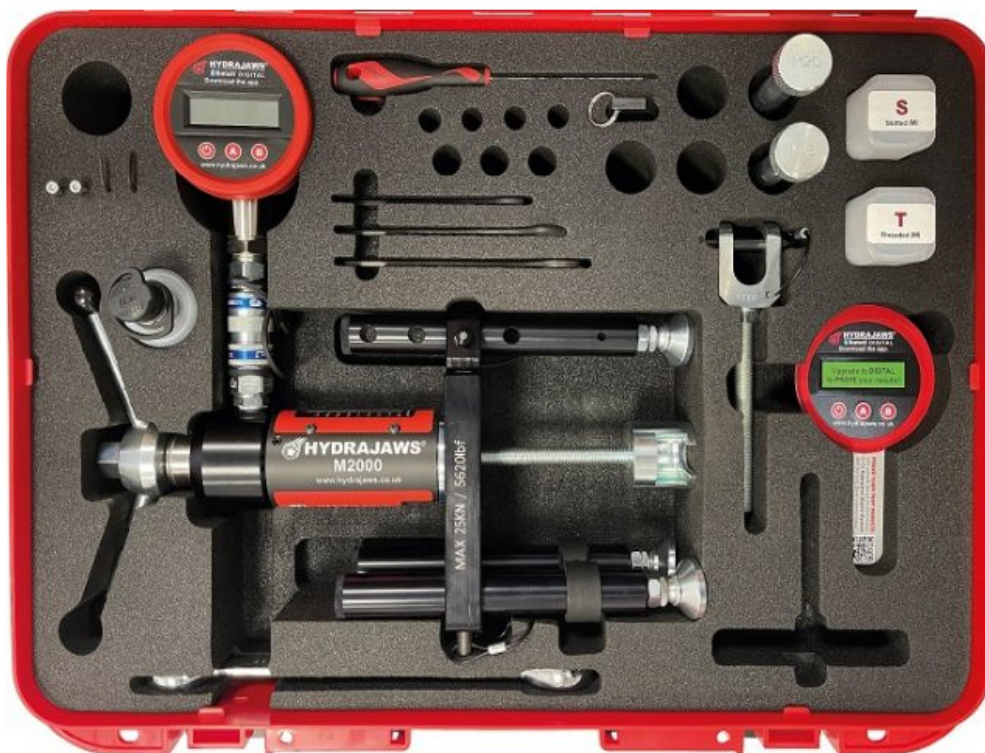
*« The installer shall check the suitability (with the considered material) applying on all structural anchors an axial tensile load of 5kN to check the strength of the fixing.*

*The structural anchor should hold up the load for at least 15 seconds. »*

- The setting up is simple and fast.
- Light and handy thanks to its carrying handle.
- The value is readable directly on the gauge.
- Packaged in a transport case with a set of accessories to adapt to all types of fixing.







The kit includes the following adapters:

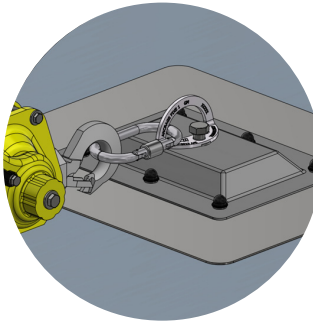
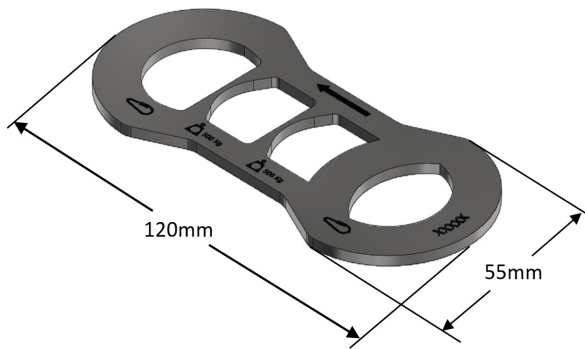
- M12 Ringbolt adaptor clevis
- Bolt tester adaptor with M12 locking adaptor
- M16 & M20 Threaded stud adaptors
- Six slotted button adaptors: 4.5, 5.5, 6.5, 8.5, 10.5, 12.5mm
- Six threaded button adaptors: M4, M5, M6, M8, M10, M12

\*By default, we provide an analog gauge, but you can choose a digital gauge for an additional cost.

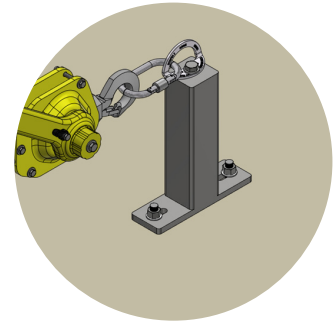


## RAPID CONTROL PLATE (RCP)

**The RCP plate** is designed to quickly prove the right performance of your fixings. It complies with the requirements of the anchorage devices and can be used to test fixings on all types of structures (concrete, steel deck, composite, zinc, etc.).

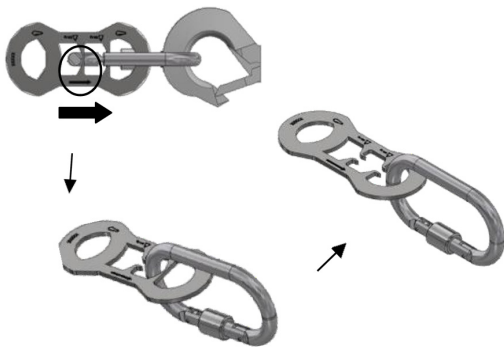


Baseplate mounting



Post mounting

### Mode of operation



#### Procedure:

1. Attach a carabiner or connector to the anchor point being tested and connect the RCP in the indicated direction
2. Wrap a sling, rope or chain around the fixed reference point
3. Connect the RCP to the fixed reference point using a hoist
4. Tension the device gradually and smoothly in the direction indicated by the PCR plate
5. Extend the tensioning until the break of the first indicator and then the second indicator of the RCP
6. Then stop the process

#### Validation:

- No breakage of the fastener
- No permanent deformation

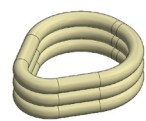
### Accessories (not supplied)



Hoist  
(SWL 600kg Minimum)



Carabiner/connector  
(EN363/SWL 600 Kg)



Sling/Rope/Chain  
(SWL 500 Kg)